

ALMADEN MINERALS LTD.
MANAGEMENT'S DISCUSSION AND ANALYSIS
June 30, 2022

INTRODUCTION

This Management's Discussion and Analysis ("**MD&A**") for Almaden Minerals Ltd. ("**Almaden**" or the "**Company**") has been prepared based on information known to management as of August 5, 2022. This MD&A is intended to help the reader understand, and should be read in conjunction with, the condensed consolidated interim financial statements of Almaden for the financial period ended June 30, 2022 and supporting notes. The condensed consolidated interim financial statements have been prepared in accordance and compliance with International Financial Reporting Standards ("**IFRS**") as issued by the International Accounting Standards Board ("**IASB**").

Management is responsible for the preparation and integrity of the Company's condensed consolidated interim financial statements, including the maintenance of appropriate information systems, procedures and internal controls. The audit committee of the board of directors of the Company (the "**Board**") meets with management regularly to review the Company's condensed consolidated interim financial statements and MD&A, and to discuss other financial, operating and internal control matters.

All currency amounts used in this MD&A are expressed in Canadian dollars unless otherwise noted.

The Company's common stock is quoted on the NYSE American stock exchange under the trading symbol "AAU" and on the Toronto Stock Exchange under the symbol "AMM".

This MD&A contains forward looking statements that involve numerous risks and uncertainties. The Company continually seeks to minimize its exposure to business risks, but by the nature of its business and exploration activities and size, will always have some risk. These risks are not always quantifiable due to their uncertain nature. Should one or more of these risks and uncertainties, including those described under the heading "Risk factors" in our Annual Information Form ("AIF") and those set forth in this MD&A under the headings "Cautionary Notes Regarding Forward-Looking Statements" materialize, or should underlying assumptions prove incorrect, then actual results may vary materially from those described in forward-looking statements.

ADDITIONAL INFORMATION

The Company's financial statements, MD&A and additional information relevant to the Company, including the Company's AIF for the year ended December 31, 2021, can be found on SEDAR at www.sedar.com, on the EDGAR section of the SEC's website at www.sec.gov, and/or on the Company's website at www.almadenminerals.com.

QUARTERLY HIGHLIGHTS

On July 6, 2022, Almaden reported that the Ixtaca project was selected to be included in a pilot project conducted by the United Nation's (UN) Expert Group on Resource Management in coordination with Mexico's Ministry of Economy ('Economia').

The purpose of the pilot project is to explore how the application of standards such as those of the UNFC (United Nations Framework Classification) and the UNRMS (United Nations Resources Management System) may help strengthen activities with different stakeholders and encourage the achievement of the UN's Sustainable Development Goals.

Almaden initially expressed its interest in being part of this project in 2021, and after a site visit and several presentations on the project, the UN group of experts on sustainable resource management have agreed that Ixtaca meets the general criteria to be considered in the work to be carried out in this pilot project. The

project will be managed through the UN's Centre of Excellence in the Sustainable Management of Resources for Mexico and Latin America in coordination with the Extractive Activities Unit at the Ministry of Economy. For further detail please see the July 6, 2022 press release.

On July 4, 2022, the Company reported that Economia was officially notified of the April, 2022 decision of the Supreme Court of Justice of Mexico ("SCJN") relating to the Mineral Title Lawsuit, and in turn notified Almaden that the Company's mineral titles relating to the Ixtaca project are "ineffective" but that the Company's mineral title applications were filed in conformity with the Mexican mineral title law. The Company understands this to mean that the mineral title has reverted to application status, and that these applications preserve the mineral rights for Almaden but do not allow the Company to engage in exploration, until such time as Economia completes its court-ordered indigenous consultation in the area covered by the mineral title applications.

As previously reported on April 27 and February 17 of this year, in its final decision the SCJN takes note of the application of international law and jurisprudence to the implementation of consultation by Mexican authorities with relevant indigenous communities. The final decision provides additional detail to Mexican authorities regarding the procedures required to be followed by those authorities in the performance of indigenous consultation prior to the grant of mineral claims. The decision also clarifies that unless there is a significant impact on the rights of an indigenous community caused by the granting of the mineral title, such as relocation or something similar, title issuance is not dependent upon the consent of the indigenous community in question. As previously disclosed, the Company has no interest in holding mineral claims over the land of the indigenous community which initiated this legal case. For additional background on the Mineral Title Lawsuit, please see the "Risks and Uncertainties" section, under the subheading "Title to Mineral Properties".

During the reporting period the Company also announced that the environmental permit application ("MIA") is substantially complete. Almaden looks forward to being in a position to submit the MIA application once the HRIA document (see below) and the indigenous consultation regarding the mineral title issuance, are finalized.

The Company continues to advance the Human Rights Impact Assessment ("HRIA"), which aims to predict, identify, characterize, and assess the impacts that the Ixtaca project may have on human rights, as well as to propose strategies which amplify the positive impacts and mitigate or compensate for any negative ones. While not a requirement under Mexican law, the Company believes that completion of an HRIA reflects best international standards and produces substantial long-term value for stakeholders as it is conducive to operational continuity, community integration with the project, and culturally pertinent sustainable development for all stakeholders.

This important exercise involves extensive field work under the oversight of an Advisory Committee comprised of local community representatives and subject-matter experts. Significant progress has been made on the HRIA and the Company anticipates that it will be finalised this year.

Over the first half of this year, the Company has been able to re-engage more proactively with local communities in the wake of the easing of COVID pandemic restrictions. Almaden has provided financial assistance for a local fire department and has also contributed to education and agricultural infrastructure in the local area. The Company has had the pleasure of working with community leaders on these matters, as well as many others as it has participated in and supported local cultural events which are celebrated by the communities. All community work at Ixtaca is being conducted in compliance with the directives of the Mexican Institute for Social Security ("IMSS").

OVERALL PERFORMANCE

Overview

Company Mission and Focus

The Company's goal is to advance its wholly-owned Ixtaca gold-silver deposit to become a low-cost, modern mine which makes a positive social difference.

Qualified Person

Morgan Poliquin, P.Eng., a "**Qualified Person**" as defined in National Instrument 43-101 *Standards of Disclosure for Mineral Projects* ("**NI 43-101**") and the President, Chief Executive Officer and a director of Almaden, has reviewed and approved the scientific and technical information in this MD&A. Much of the scientific and technical contents in this MD&A are derived from the Ixtaca Gold-Silver Project, Puebla State, Mexico, NI 43-101 Technical Report on the Feasibility Study with an effective date of January 24, 2019 (the "FS"). The independent Qualified Persons responsible for preparing the FS are set out below under the heading, "Qualified Persons, Sample Preparation, Analyses, Quality Control and Assurance".

Use of the Terms "Mineral Resources" and "Mineral Reserves"

All capitalized terms used but not defined in this MD&A have the meanings given to them in NI 43-101 and the 2014 CIM definitions Standards on Mineral Resources and Reserves (the "**CIM Standards**").

Any reference in this MD&A to Mineral Resources does not mean Mineral Reserves.

Under CIM Standards, a Mineral Reserve is the economically mineable part of a Measured or Indicated Mineral Resource demonstrated by a Preliminary Feasibility Study or a Feasibility Study. This study must include adequate information on mining, processing, metallurgical, economic and other relevant factors that demonstrate, at the time of reporting, that extraction could reasonably be justified. A Mineral Reserve includes diluting materials and allowances for losses that may occur when the material is mined.

A Mineral Resource is a concentration or occurrence of solid material of economic interest in or on the Earth's crust in such form, grade or quality and quantity that there are reasonable prospects for eventual economic extraction. The location, quantity, grade or quality, continuity and other geological characteristics of a Mineral Resource are known, estimated or interpreted from specific geological evidence and knowledge, including sampling.

Mineral Resources are sub-divided, in order of increasing geologic confidence, into Inferred, Indicated and Measured categories. An Inferred Mineral Resource has a lower level of confidence than that applied to an Indicated Mineral Resource. An Indicated Mineral Resource has a higher level of confidence than an Inferred Mineral Resource but has a lower level of confidence than a Measured Mineral Resource.

An Inferred Mineral Resource is that part of a Mineral Resource for which quantity and grade or quality are estimated on the basis of limited geological evidence and sampling. Geological evidence is sufficient to imply but not verify geological and grade or quality continuity. An Inferred Mineral Resource must not be converted to a Mineral Reserve. It is reasonably expected that the majority of Inferred Mineral Resources could be upgraded to Indicated Mineral Resources with continued exploration.

An Indicated Mineral Resource has a higher level of confidence than an Inferred Mineral Resource but has a lower level of confidence than a Measured Mineral Resource, and may only be converted to a Probable Mineral Reserve.

A Measured Mineral Resource has a higher level of confidence than that applying to either an Indicated Mineral Resource or an Inferred Mineral Resource. It may be converted to a Proven Mineral Reserve or to a Probable Mineral Reserve.

The terms “Mineral Reserve,” “Proven Mineral Reserve” and “Probable Mineral Reserve” are Canadian mining terms as defined in accordance with NI 43-101 and the CIM Standards. These definitions differ from the definitions in SEC Industry Guide 7 under the United States *Securities Act of 1933*, as amended. Under SEC Industry Guide 7, a reserve is defined as part of a mineral deposit which could be economically and legally extracted or produced at the time the reserve determination is made. Under SEC Industry Guide 7 standards, a “final” or “bankable” feasibility study is required to report reserves, the three-year historical average price is used in any reserve or cash flow analysis to designate reserves, and the primary environmental analysis or report must be filed with the appropriate governmental authority. In addition, the terms “Mineral Resource,” “Measured Mineral Resource,” “Indicated Mineral Resource” and “Inferred Mineral Resource” are defined in and required to be disclosed by NI 43-101 and the CIM Standards; however, these terms are not defined terms under SEC Industry Guide 7 and are normally not permitted to be used in reports and registration statements filed with the SEC. **Investors are cautioned not to assume that any part or all of mineral deposits in these categories will ever be converted into reserves under the SEC Industry Guide 7.** “Indicated Mineral Resource” and “Inferred Mineral Resource” have a great amount of uncertainty as to their existence, and great uncertainty as to their economic and legal feasibility. It cannot be assumed that all, or any part, of an Indicated Mineral Resource or Inferred Mineral Resource will ever be upgraded to a higher category. Under Canadian rules, estimates of Inferred Mineral Resources may not form the basis of Feasibility Studies or Pre-Feasibility Studies, except in rare cases. **Investors are cautioned not to assume that all or any part of an Inferred Mineral Resource exists or is economically or legally mineable.** Disclosure of “contained ounces” in a resource is permitted disclosure under Canadian regulations; however, the SEC normally only permits issuers to report mineralization that does not constitute “reserves” by SEC standards as in place tonnage and grade without reference to unit measures.

Accordingly, information contained in this MD&A or incorporated by reference herein contains descriptions of the Company’s mineral deposits that may not be comparable to similar information made public by U.S. companies subject to the reporting and disclosure requirements under United States federal securities laws and the rules and regulations promulgated thereunder.

Ixtaca (Tuligtic) – Mexico

The following is a brief description of the sole mineral property owned by the Company. Additional information can be obtained from Almaden’s website at www.almadenminerals.com and in the FS, which is available under the Company’s SEDAR profile at www.sedar.com.

Location and Ownership

The Ixtaca Project is 100% owned by the Company, subject to a 2% net smelter return (“NSR”) royalty held by Almadex Minerals Ltd. (“Almadex”). The Ixtaca Project lies within the Trans Mexican Volcanic Belt about 120 kilometres southeast of the Pachuca gold/silver deposit, which has reported historic production of 1.4 billion ounces of silver and 7 million ounces of gold. The Tuligtic property, located in Puebla State, was acquired by staking in 2001 following prospecting work carried out by the Company in the area. Since that time, Almaden has had agreements to develop the property with three separate parties, all of whom relinquished all rights to the property and none of whom conducted work on the Ixtaca zone. The Ixtaca zone is located along a trend of shallowly eroded epithermal systems that Almaden has identified in eastern Mexico.

Recent Updates

On July 4, 2022, the Company reported that Mexico’s Ministry of the Economy (“Economia”) was officially notified of the April, 2022 decision of the Supreme Court of Justice of Mexico (“SCJN”) relating to the Mineral Title Lawsuit, and in turn notified Almaden that the Company’s mineral titles relating to the Ixtaca project are “ineffective” but that the Company’s mineral title applications were filed in conformity with the Mexican mineral title law. The Company understands this to mean that the mineral title has reverted to application status, and that these applications preserve the mineral rights for Almaden but do not allow the Company to engage in exploration, until such time as Economia completes its court-ordered indigenous consultation in the area of the mineral title applications.

As reported on April 27 and February 17, 2022, in its final decision the SCJN takes note of the application of international law and jurisprudence to the implementation of consultation by Mexican authorities with relevant indigenous communities. The final decision provides additional detail to Mexican authorities regarding the procedures required to be followed by those authorities in the performance of indigenous consultation prior to the grant of mineral claims. The decision also clarifies that unless there is a significant impact on the rights of an indigenous community caused by the granting of the mineral title, such as relocation or something similar, title issuance is not dependent upon the consent of the indigenous community in question. As previously disclosed, the Company has no interest in holding mineral claims over the land of the indigenous community which initiated this legal case. For additional background on the Mineral Title Lawsuit, please see the “Risks and Uncertainties” section, under the subheading “Title to Mineral Properties”.

On December 11, 2018, the Company reported the completion of a Feasibility Study on the Ixtaca Project, which estimated the initial capital cost of Ixtaca to be US\$174 million. None of this amount has been spent to date. The Company is currently pursuing the permitting of the project with Mexican authorities and anticipates that it will incur less than \$10 million in the lead-up to potential construction, exclusive of corporate general, administrative, discretionary exploration drilling, and financing costs, with such amounts relating to permitting costs, land acquisition, mill storage, and contingencies. Land acquisition costs generally refer to private acquisition agreements with surface landowners in order to facilitate a Change of Use of Land permit. The \$10 million expenditure mentioned in this paragraph is not required for the purposes of maintaining the Ixtaca Project.

The Company expects to keep the Rock Creek Mill in storage until the environmental impact assessment permit is approved. The Rock Creek Mill has been dismantled and prepared for shipping.

Aside from the potential impact of the above-mentioned decision of the SCJN on the Company’s mineral claims, which the Company is not yet in a position to assess, the significant events remaining prior to being in a position to commence construction are as follows:

- MIA permit application and approval.
- Change of Use of Land permit.
- Project financing.

Feasibility Study and Updated Resource Estimate

On December 11, 2018, Almaden announced the results of an independent Feasibility Study titled “Ixtaca Gold-Silver Project, Puebla State, Mexico NI 43-101 Technical Report on the Feasibility Study” (defined above as the “FS”). The FS was subsequently filed on SEDAR on January 24, 2019. An update to the FS was filed on SEDAR on October 3, 2019.

FS HIGHLIGHTS

(All values shown are in \$US. Base case uses \$1,275/oz gold and \$17/oz silver prices. Gold and silver equivalency calculations assume 75:1 ratio).

- Average annual production of 108,500 ounces gold and 7.06 million ounces silver (203,000 gold equivalent ounces, or 15.2 million silver equivalent ounces) over first 6 years;
- After-tax IRR of 42% and after-tax payback period of 1.9 years;
- After-tax NPV of \$310 million at a 5% discount rate;
- Initial Capital of \$174 million;
- Conventional open pit mining with a Proven and Probable Mineral Reserve of 1.39 million ounces of gold and 85.2 million ounces of silver;

- Pre-concentration uses ore sorting to produce a total of 48 million tonnes of mill feed averaging 0.77 g/t gold and 47.9 g/t silver (2.03 g/t gold equivalent over first 6 years, 1.41 g/t gold equivalent over life of mine);
- Average LOM annual production of 90,800 ounces gold and 6.14 million ounces silver (173,000 gold equivalent ounces, or 12.9 million silver equivalent ounces);
- Operating cost \$716 per gold equivalent ounce, or \$9.55 per silver equivalent ounce;
- All-in Sustaining Costs (“AISC”), including operating costs, sustaining capital, expansion capital, private and public royalties, refining and transport of \$850 per gold equivalent ounce, or \$11.30 per silver equivalent ounce;
- Elimination of tailings dam by using filtered tailings significantly reduces the project footprint and water usage.

Feasibility Study Summary

Almaden engaged a team of consultants led by Moose Mountain Technical Services (“MMTS”) to undertake the FS. MMTS was responsible for mining, metallurgy, processing, infrastructure and the economic evaluation, APEX Geoscience Ltd. for exploration and drill data QA/QC, Giroux Consultants for the resources estimation, and SRK Consulting (U.S.), Inc. (“SRK”) for aspects related to geotechnical, tailings and water management.

Table 1 – Summary of the Economics of the Ixtaca Feasibility Study

	Amount	
Pre-Tax NPV (5%)	\$470 million	
Pre-Tax IRR	57%	
Pre-Tax Payback	1.6 Years	
Post-Tax NPV (5%)	\$310 million	
Post-Tax IRR	42 %	
Post-Tax Payback	1.9 Years	
Initial Capital	\$174 million	
Life of Mine	11 Years	
Waste/ ROM ore ratio	4.5:1	
	Years 1 - 6	Life of Mine (LOM)
Cash Operating Cost (\$/AuEq oz.)	667	716
AISC (\$/AuEq oz.)	810	850
Annual Gold production (000's oz.)	108	90
Annual Silver production (000's oz.)	7,071	6,160
Annual Gold equivalent production (000's oz.)	202	173
Average mill feed grade (g/t) Au	1.10	0.77
Average mill feed grade (g/t) Ag	69.3	47.9
Average mill feed grade (g/t) AuEq	2.03	1.41

Economics assume a Gold Price of \$1275/Oz and Silver Price of \$17/Oz and are estimated on a 100% equity basis.

Geology and Mineral Resource Estimate

The Ixtaca deposit is an epithermal gold-silver deposit, mostly occurring as anastomosing (branching and re-connecting) vein zones hosted by limestone and shale basement rocks with a minor component of disseminated mineralisation hosted in overlying volcanic rocks. The wireframe models constructed to define the overall vein zones therefore contain interspersed irregular zones of barren limestone dilution. In this FS the limestone unit hosts 75% of the metal produced, the volcanic unit hosts 12% and the black shale unit hosts 13% on a gold-equivalent basis. The Mineral Resources for Ixtaca are presented in Table 2.

Table 2- Summary of Ixtaca Mineral Resources

MEASURED RESOURCE							
AuEq Cut-off	Tonnes > Cut-off	Grade>Cut-off			Contained Metal x 1,000		
(g/t)	(tonnes)	Au (g/t)	Ag (g/t)	AuEq (g/t)	Au (ozs)	Ag (ozs)	AuEq (ozs)
0.30	43,380,000	0.62	36.27	1.14	862	50,590	1,591
0.50	32,530,000	0.75	44.27	1.39	788	46,300	1,454
0.70	25,080,000	0.88	51.71	1.63	711	41,700	1,312
1.00	17,870,000	1.06	61.69	1.95	608	35,440	1,118

INDICATED RESOURCE							
AuEq Cut-off	Tonnes > Cut-off	Grade>Cut-off			Contained Metal x 1,000		
(g/t)	(tonnes)	Au (g/t)	Ag (g/t)	AuEq (g/t)	Au (ozs)	Ag (ozs)	AuEq (ozs)
0.30	80,760,000	0.44	22.67	0.77	1,145	58,870	1,994
0.50	48,220,000	0.59	30.13	1.02	913	46,710	1,586
0.70	29,980,000	0.74	37.79	1.29	715	36,430	1,240
1.00	16,730,000	0.96	47.94	1.65	516	25,790	888

INFERRED RESOURCE							
AuEq Cut-off	Tonnes > Cut-off	Grade>Cut-off			Contained Metal x 1,000		
(g/t)	(tonnes)	Au (g/t)	Ag (g/t)	AuEq (g/t)	Au (ozs)	Ag (ozs)	AuEq (ozs)
0.30	40,410,000	0.32	16.83	0.56	412	21,870	726
0.50	16,920,000	0.44	25.43	0.80	237	13,830	436
0.70	7,760,000	0.57	33.80	1.06	142	8,430	264
1.00	3,040,000	0.79	43.64	1.42	77	4,270	139

1. *Ixtaca Mineral Resources Estimate have an effective date of 8 July 2018. The Qualified person for the estimate is Gary Giroux, P.Eng.*
2. *Base Case 0.3 g/t AuEq Cut-Off grade is highlighted. Also shown are the 0.5, 0.7 and 1.0 g/t AuEq cut-off results. AuEq calculation based average prices of \$1250/oz gold and \$18/oz silver. The Base Case cut-off grade includes consideration of the open pit mining method, 90% metallurgical recovery, mining costs of \$1.82/t, average processing costs of \$11.7, G&A costs of \$1.81/t*
3. *Mineral Resources are reported inclusive of those Mineral Resources that have been converted to Mineral Reserves. Mineral Resources that are not Mineral Reserves do not have demonstrated economic viability.*
4. *The estimate of Mineral Resources may be materially affected by environmental, permitting, legal or other relevant issues. The Mineral Resources have been classified according to the CIM Definition Standards for Mineral Resources and Mineral Reserves in effect as of December 11, 2018.*
5. *All figures were rounded to reflect the relative accuracy of the estimates and may result in summation differences.*

Mine Plan

The Ixtaca gold-silver project is planned as a typical open pit mining operation using contractor mining. Initial production will ramp up to a mill feed rate of 7,650 tonnes per day followed by an expansion to 15,300 tonnes per day from Year 5 onwards.

An ore control system is planned to provide field control for the loading equipment to selectively mine ore grade material separately from the waste.

Mining operations will be based on 365 operating days per year with three 8 hour shifts per day.

Processing

The FS reflects the Rock Creek process plant which has been purchased by Almaden. Run of mine ore will be crushed in a three-stage crushing circuit to -9 mm.

The FS also incorporates ore sorting, test work for which has shown the ability to separate barren or low grade limestone host rock encountered within the vein swarm from vein and veined material (see Almaden news release of July 16th 2018). Product from the secondary crusher will be screened in to coarse (+20mm), mid-size (12 to 20 mm), and fine (-12mm) fractions. Coarse and mid-size ore will be sorted by an XRT ore sort machine to eject waste rock. Fine ore will bypass the ore sorting and is sent directly to the mill.

Ore sort waste from Limestone and Black Shale is below waste/ore cutoff grade and is placed in the waste rock dump. Ore sort 'waste' from the Volcanic unit is low grade ore and will be stockpiled for processing later in the mine life. Ore sorting pre-concentration increases the mill feed gold and silver grades by 32% and 31% respectively compared to run of mine (ROM) grades. Table 3 shows ROM grades with ore sort waste removed from the ROM, and the resulting mill feed.

Table 3 Ore Sort Mill Feed grade improvement

		ROM	Ore sort	Mill
		Ore	Waste	Feed
Limestone	million tonnes	51.5	18.8	32.7
	Au g/t	0.572	0.24	0.763
	Ag g/t	37.5	12.0	52.2
Black Shale	million tonnes	12.2	6.3	5.8
	Au g/t	0.517	0.25	0.806
	Ag g/t	44.4	20.0	70.8
Volcanic	million tonnes	9.4	-	9.4
	Au g/t	0.790	-	0.790
	Ag g/t	18.6	-	18.6
TOTAL	million tonnes	73.1	25.1	48.0
	Au g/t	0.591	0.24	0.773
	Ag g/t	36.3	14.0	47.9

Crushed ore is transported to the grinding circuit by an over land conveyor. Grinding to 75 microns is carried out with ball milling in a closed circuit with cyclones. Cyclone underflow is screened and the screen undersize is treated in semi-batch centrifugal gravity separators to produce a gravity concentrate.

The gravity concentrate will be treated in an intensive leach unit with gold and silver recovered from electrowinning cells.

The cyclone overflow will be treated in a flotation unit to produce a flotation concentrate. After regrinding the flotation concentrate leaching will be carried out in 2 stages. CIL leaching for 24 hours will complete gold extraction, followed by agitated tank leaching to complete silver leaching. A carbon desorption process will recover gold and silver from the CIL loaded carbon, and a Merrill Crowe process will recover gold and silver from pregnant solution from the agitated leach circuit.

Cyanide destruction on leach residue is carried out using the SO₂/Air process. Final tailings are thickened and filtered then dry stacked and co-disposed with mine waste rock.

Average process recoveries from mill feed to final product over the life of mine are summarized in Table 4 for each ore type.

Table 4 Average Life of Mine Process Recoveries from Mill Feed

	Gold	Silver
Limestone	88.5%	86.8%
Volcanic	64.4%	76.3%
Black Shale	54.5%	84.7%

Water and Waste Management

One of Almaden’s top priorities at Ixtaca is water quality and a mine plan that provides a permanent and consistent long-term supply of water for residents. The plan outlined in the FS has evolved through the open dialogue between the Company and residents over the past number of years and as part of the Social Investment Plan consultation (see section below titled “Community Consultations”).

Rainfall in the Ixtaca vicinity falls primarily during a relatively short rainy season. With no local water storage facilities, the flash flows of water are currently lost to the communities. Under the FS, rainwater will be captured during the rainy season in the water storage reservoir and slowly released during the dry season, for use by both the mining operation and local residents.

Extensive geochemical studies have evaluated the potential for acid rock drainage and metal leaching from the waste rock and tailings using globally accepted standardised methods of laboratory testing and in compliance with Mexican regulations. Most of the waste rock at Ixtaca is limestone, and the studies of both waste rock and tailings have consistently shown that there is more than enough neutralising potential present in the waste rock to neutralise any acid generated. Testing to date also indicates low potential for metal leaching. These results along with the excellent access to potential markets in the growing industrial state of Puebla, indicate the potential for rock waste and tailings from the Ixtaca deposit to be secondary resources such as aggregate and cement feedstock.

In consideration of these findings and the hydrologic conditions at Ixtaca, Almaden and its consultants reviewed Best Available Technology and Best Applicable Practice in the design and planning of tailings management at Ixtaca, which resulted in selecting a dry-stack tailings facility which would include co-disposal of waste with filtered tailings, use much less water than traditional slurry facilities, reduce the mine footprint, allow for better dust control, and enable earlier rehabilitation of the tailings and waste disposal areas.

Mineral Reserve Estimate

Mineral Reserves in Table 5, have been developed by MMTS with an effective date of November 30, 2018, and are classified using the CIM Standards. The Mineral Reserves are based on an engineered open pit mine plan.

Table 5 – Mineral Reserves

	Tonnes (millions)	Diluted Average Grades		Contained Metal	
		Au (g/t)	Ag (g/t)	Au - '000 ozs	Ag - '000 ozs
Proven	31.6	0.70	43.5	714	44,273
Probable	41.4	0.51	30.7	673	40,887
TOTAL	73.1	0.59	36.3	1,387	85,159

- *Mineral Reserves have an effective date of November 30, 2018. The qualified person responsible for the Mineral Reserves is Jesse Aarsen, P.Eng of Moose Mountain Technical Services.*
- *The cut-off grade used for ore/waste determination is NSR>=\$14/t*

- All Mineral Reserves in this table are Proven and Probable Mineral Reserves. The Mineral Reserves are not in addition to the Mineral Resources but are a subset thereof. All Mineral Reserves stated above account for mining loss and dilution.
- Associated metallurgical recoveries (gold and silver, respectively) have been estimated as 90% and 90% for limestone, 50% and 90% for volcanic, 50% and 90% for black shale.
- Reserves are based on a US\$1,300/oz gold price, US\$17/oz silver price and an exchange rate of US\$1.00:MX\$20.00.
- Reserves are converted from resources through the process of pit optimization, pit design, production schedule and supported by a positive cash flow model.
- Rounding as required by reporting guidelines may result in summation differences.

Legal, political, environmental, or other risks that could materially affect the potential development of the Mineral Reserves are provided below under the heading “Risk factors” and under the heading “Risks and Uncertainties” sections entitled “Item 3. Key Information - Risk Factors”, “Item 4. Information on the Company - Business Overview”, “Item 4. Information on the Company – Principal Property Interests” and “Item 5. Operating and Financial Review and Prospects” in the Company’s Annual Information Form.

Capital and Operating Costs

Initial capital cost for the Ixtaca gold-silver project is \$174 million and sustaining capital (including expansion capital) is \$111 million over the LOM. The estimated expansion capital of \$64.5 million will be funded from cashflow in Year 4 for the throughput ramp-up in Year 5. Estimated LOM operating costs are \$26.8 per tonne mill feed. The following tables summarize the cost components:

Table 6 – Initial Capital Costs (\$ millions)

Mining	\$22.2
Process	\$80.2
Onsite Infrastructure	\$24.3
Offsite Infrastructure	\$7.5
Indirects, EPCM, Contingency and Owner’s Costs	\$39.9
Total	\$174.2

Table 7 – Expansion Capital Costs (\$ millions)

Mining	\$1.2
Process	\$56.9
Infrastructure	\$1.5
Indirects, EPCM, Contingency and Owner’s Costs	\$5.0
Total	\$64.5

Table 8 – LOM Average Operating Costs (\$)

Mining costs	\$/tonne milled	\$15.2
Processing	\$/tonne milled	\$10.5
G&A	\$/tonne milled	\$1.1
Total	\$/tonne milled	\$26.8

Economic Results and Sensitivities

A summary of financial outcomes comparing base case metal prices to alternative metal price conditions are presented below. The FS base case prices are derived from current common peer usage, while the alternate cases consider the project’s economic outcomes at varying prices witnessed at some point over the three years prior to the effective date of the FS.

Table 9 - Summary of Ixtaca Economic Sensitivity to Precious Metal Prices (Base Case is Bold)

Gold Price (\$/oz)	1125	1200	1275	1350	1425
Silver Price (\$/oz)	14	15.5	17	18.5	20
Pre-Tax NPV 5% (\$million)	229	349	470	591	712
Pre-Tax IRR (%)	35%	46%	57%	67%	77%
Pre-Tax Payback (years)	2.0	1.8	1.6	1.4	1.3
After-Tax NPV 5% (\$million)	151	233	310	388	466
After-Tax IRR (%)	25%	34%	42%	49%	57%
After-Tax Payback (years)	2.6	2.1	1.9	1.7	1.5

Community Consultations

Almaden has a long history of engagement with communities in the region around the Ixtaca Project. Amongst many other initiatives, the Company has trained and employed drillers and driller helpers from the local area, held ten large-scale community meetings totalling over 4,500 people, taken 480 local adults on tours of operating mines in Mexico, and held monthly technical meetings on a diverse range of aspects relating to the mining industry and the Ixtaca project. On December 9, 2018, Almaden hosted a large-scale community meeting which was attended by over 800 people, including representatives of the new Federal Government in Mexico. At the end of 2021, the Company convened an outdoor end of year gathering in a large open space and is very appreciative of the ongoing support and optimism from local communities regarding the future of the project and the tremendous value that we can collectively deliver to the local area through project development.

In 2017, Almaden engaged a third-party consultant to lead a community consultation and impact assessment at the Ixtaca project. In Mexico, only the energy industry requires completion of such an assessment (known in Mexico as a Trámite Evaluación de Impacto Social, or “EVIS”) as part of the permitting process. The purpose of these studies is to identify the people in the area of influence of a project (“Focus Area”), and assess the potential positive and negative consequences of project development to assist in the development of mitigation measures and the formation of social investment plans. To Almaden’s knowledge, this is the first time a formal EVIS has been completed in the minerals industry in Mexico, and as such reflects the Company’s commitment to best national and international standards in Ixtaca project development.

The EVIS and subsequent work on the development of a Social Investment Plan were conducted according to Mexican and international standards such as the Guiding Principles on Business and Human Rights, the Equator Principles, and the OECD Guidelines for Multinational Enterprises and Due Diligence Guidance for Meaningful Stakeholder Engagement in the Extractive Sector.

Fieldwork for the EVIS was conducted by an interdisciplinary group of nine anthropologists, ethnologists and sociologists graduated from various universities, who lived in community homes within the Ixtaca Focus Area during the FS to allow for ethnographic immersion and an appreciation for the local customs and way of life. This third-party consultation sought voluntary participation from broad, diverse population groups, with specific attention to approximately one thousand persons in the Focus Area.

This extensive consultation resulted in changes to some elements of the mine design, including the planned construction of a permanent water reservoir to serve the local area long after mine closure, and the shift to dry-stack filtered waste management.

The Company has now commenced work on a Human Rights Impact Assessment (“HRIA”) at the Ixtaca project. The HRIA will be conducted in accordance with best international practice and in observance of the latest developments in international human rights legislation and precedents. It will seek to predict, identify, characterize, and assess the impacts the project may have on these matters and will propose strategies which amplify the positive impacts and mitigate or compensate for any negative ones.

Economic Contributions

The FS anticipates that approximately 600 direct jobs will be created during the peak of construction, and 420 jobs will be generated during operations. Assuming base case metal prices, under this FS, Ixtaca is anticipated to generate approximately US\$130 million in Federal taxes, US\$50 million in State taxes and US\$30 million in Municipal taxes.

Closure and Reclamation

Mine waste areas will be reclaimed and re-vegetated at the end of mining activity. At closure, all buildings will be removed and remaining facilities, except for the water storage dam (WSD), will be reclaimed and re-vegetated. The WSD and the availability of this water to the local communities will remain after closure.

Opportunities

Several opportunities excluded from the base case economics have been identified in the FS.

- Results from the ore sorting tests identified several opportunities to increase the ore sort efficiency and could result in a further increase in mill feed grades. These opportunities will be investigated with future test work.
- Gold extraction recoveries in the minor black shale unit are currently impeded by the presence of carbonaceous material. Recent test work including carbon pre-flotation and ultra-fine gravity separation has demonstrated that the carbon can be liberated and removed with a significant improvement in gold recovery. This test work is ongoing and is expected to improve the black shale gold recovery.
- Test work carried out on Ixtaca limestone waste rock samples concluded that Ixtaca limestone waste rock is suitable for many types of concrete use and other applications such as shotcrete, subgrade, asphalt aggregate or railroad ballast with little effort and processing. Concrete produced with tests on Ixtaca limestone aggregate performed very well, achieving the 28-day design compressive strength of 30 MPa already at 7 days, and more than 40 MPa at 28 and 56 days.

Ixtaca is connected by 60 km of paved road to the industrial city Apizaco, 120 km of paved road to the state capital of Puebla, and 170 km of paved road to Mexico City.

The sale of limestone ore sort rejects (a waste product) as an aggregate presents a very significant potential source of revenue to the project at no additional capital or operating cost to the project. There is also potential to sell some of the ROM waste rock as an aggregate.

- Fine aggregate from crushing and grinding operations is also expected to perform in a similar way to the coarse aggregate. Chemical analysis of the fine aggregate indicates that it is also suitable as a raw material for the production of lime cement or Portland cement if properly processed and blended with suitable silica aluminates.

Next Engineering and Development Steps

In December 2020, the Company announced that its initial MIA was not approved by Mexican authorities. The Company is now preparing a revised MIA permit application which incorporates additional data presently available to the Company as well as data gathered in further field studies.

Qualified Persons, Sample Preparation, Analyses, Quality Control and Assurance

The independent qualified persons responsible for preparing the FS were: Jesse Aarsen, P.Eng., Tracey Meintjes, P.Eng., Edward Wellman PE, PG, CEG, Clara Balasko, P.E., Kristopher Raffle, P.Geo., and Gary Giroux, M.A.Sc., P.Eng., all of whom acted as independent consultants to the Company, and are Qualified Persons as defined by NI 43-101.

The analyses used in the preparation of the mineral resource statement were carried out at ALS Chemex Laboratories of North Vancouver ("ALS") using industry standard analytical techniques. All strongly altered or epithermal-mineralized intervals of core have been sampled. Almaden employs a maximum sample length of 2 to 3m in unmineralized lithologies, and a maximum sample length of 1m in mineralized lithologies. During the years 2010 and 2011, Almaden employed a minimum sample length of 20cm. The minimum sample length was increased to 50cm from 2012 onwards to ensure the availability of sufficient material for replicate analysis. Drill core is half-sawn using industry standard diamond core saws. After cutting, half the core is placed in a new plastic sample bag and half is placed back in the core box. Sample numbers are written on the outside of the sample bags and a numbered tag placed inside the bag. Sample bags are sealed using a plastic cable tie. Sample numbers are checked against the numbers on the core box and the sample book.

ALS sends its own trucks to the Ixtaca project to take custody of the samples at the Santa Maria core facility and transports them to its sample preparation facility in Guadalajara or Zacatecas, Mexico. Prepared sample pulps are then forwarded by ALS personnel to the ALS North Vancouver, British Columbia laboratory, which is ISO/IEC 17025:2017 and ISO 9001: 2015 certified, for analysis.

For gold, samples are first analysed by fire assay and atomic absorption spectroscopy ("AAS"). Samples that return values greater than 10 g/t gold using this technique are then re-analysed by fire assay but with a gravimetric finish. Silver is first analysed by Inductively Coupled Plasma - Atomic Emission Spectroscopy ("ICP-AES"). Samples that return values greater than 100 g/t silver by ICP-AES are then re analysed by HF-HNO₃-HClO₄ digestion with HCL leach and ICP-AES finish. Of these samples those that return silver values greater than 1,500 g/t are further analysed by fire assay with a gravimetric finish. Blanks, field duplicates and certified standards were inserted into the sample stream as part of Almaden's quality assurance and control program which complies with National Instrument 43-101 requirements. In addition to the in-house QAQC measures employed by Almaden, Kris Raffle, P.Geo. of APEX Geoscience Ltd., completed an independent review of blank, field duplicate and certified standard analyses. All QAQC values falling outside the limits of expected variability were flagged and followed through to ensure completion of appropriate reanalyses. No discrepancies were noted within the drill hole database, and all QAQC failures were dealt with and handled with appropriate reanalyses.

The mineral resource estimate referenced in this document was prepared by Gary Giroux, P.Eng., an independent Qualified Person as defined by NI 43-101.

Exploration Opportunities

In addition to the Ixtaca gold-silver deposit, there are several additional exploration targets on the Company's mineral claims, which cover an area of high level epithermal clay alteration. The project area is partially covered by volcanic ash deposits which mask underlying alteration, potential vein zones and associated soil responses. In areas devoid of this covering ash, soil sampling has defined several distinct zones of elevated gold and silver values and trace elements typically associated with epithermal vein systems. The Ixtaca zone is one of the largest areas of gold/silver soil response but it is also one of the areas with the least ash cover on the project. Management believes that the other altered and geochemically anomalous areas could represent additional zones of underlying quartz-carbonate epithermal veining like the Ixtaca zone.

The potential quantity and grade of these exploration targets is conceptual in nature. There has been insufficient exploration and/or study to define these exploration targets as a Mineral Resource. It is uncertain if additional exploration will result in these exploration targets being delineated as a Mineral Resource. The potential quantity and grade of these exploration targets has not been used in this FS.

Outlook

Almaden has access to sufficient funding to conduct its anticipated work program for the next fiscal year at the Ixtaca Project. The Company intends to proceed with the preparation of a revised MIA application and completion of the Human Rights Impact Assessment during 2022. In the normal course, MIA permits may take up to one year for review by SEMARNAT after submission.

RISKS AND UNCERTAINTIES

Below are some of the risks and uncertainties that the Company faces. For a full list of risk factors, please refer to the Company's AIF for the year ended December 31, 2021, as filed on SEDAR on March 25, 2022, under the heading "Annual Information Form".

Industry

The Company is engaged in the exploration and development of mineral properties, an inherently risky business. There is no assurance that a mineral deposit will ever be discovered, developed and economically produced. Few exploration projects result in the discovery of commercially mineable ore deposits. If market conditions make financings difficult, it may be difficult for the Company to find joint venture partners or to finance development of its projects. The Company may be unsuccessful in identifying and acquiring projects of merit.

Mineral resource estimates

The estimation of resources and mineralization is a subjective process and the accuracy of any such estimates is a function of the quality of available data and of engineering and geological interpretation and judgment. No assurances can be given that the volume and grade of resources recovered and rates of production will not be less than anticipated in the FS, the Mineral Resource Estimate, the Mineral Reserve Estimate, or otherwise.

The prices of gold, silver and other metals

The price of gold is affected by numerous factors including central bank sales or purchases, producer hedging activities, the relative exchange rate of the U.S. dollar with other major currencies, supply and demand, political, economic conditions and production levels. In addition, the price of gold has been volatile over short periods of time due to speculative activities.

The price of silver is affected by similar factors and, in addition, is affected by having more industrial uses than gold, as well as sometimes being produced as a by-product of mining for other metals with its production thus being more dependent on demand for the main mine product than supply and demand for silver. The prices of other metals and mineral products that the Company may explore for have the same or similar price risk factors.

Cash flows and additional funding requirements

The Company currently has no revenue from operations. Additional capital would be required to continue with advancement and development of its properties. The sources of funds currently available to the Company are equity capital or the offering of an interest in its projects to another party. The Company believes it currently has sufficient financial resources to undertake all of its currently planned programs.

Exchange rate fluctuations

Fluctuations in currency exchange rates, principally the Canadian/U.S. Dollar and the Canadian/MXN exchange rates, can impact cash flows. The exchange rates have varied substantially over time. Most of the Company's expenses in Mexico are denominated in U.S. Dollars and MXN. Fluctuations in exchange rates may give rise to foreign currency exposure, either favourable or unfavourable, which will impact

financial results. The Company does not engage in currency hedging to offset any risk of exchange rate fluctuation.

Impact of COVID-19 Pandemic

The Company's business could be significantly adversely affected by the effects of a widespread global outbreak of contagious disease, including the recent outbreak of respiratory illness caused by COVID-19. The Company cannot accurately predict the impact COVID-19 will have on third parties' ability to meet their obligations with the Company, including due to uncertainties relating to the ultimate geographic spread of the virus, the severity of the disease, the duration of the outbreak, and the length of travel and quarantine restrictions imposed by governments of affected countries. In particular, the continued spread of COVID-19 and its variants globally could materially and adversely impact the Company's business including without limitation, employee health, limitations on travel, the availability of industry experts and personnel, restrictions to planned drill programs, and other factors that will depend on future developments beyond the Company's control. In addition, a significant outbreak of contagious diseases in the human population could result in a widespread health crisis that could adversely affect the economies and financial markets of many countries (including those in which the Company operates), resulting in an economic downturn that could negatively impact the Company's operations and ability to raise capital.

Environmental, Climate Change, Health and Safety Regulation Compliance

The Company's exploration and development activities are subject to extensive laws and regulations governing environmental protection and employee health and safety promulgated by governments and government agencies.

Environmental (inclusive of climate change) and health and safety laws and regulations are complex and have become more stringent over time. Failure to comply with applicable environmental and health and safety laws may result in injunctions, damages, suspension or revocation of permits and imposition of penalties. Environmental regulation is evolving in a manner resulting in stricter standards and the enforcement of, and fines and penalties for, non-compliance are becoming more stringent.

The Company is also subject to various reclamation-related conditions. Reclamation requirements are designed to minimize long-term effects of mining exploitation and exploration disturbance by requiring the operating company to control possible deleterious effluents and to re-establish to some degree pre-disturbance land forms and vegetation. The Company is subject to such requirements in connection with its activities at Ixtaca. Any significant environmental issues that may arise, however, could lead to increased reclamation expenditures and could have a material adverse impact on the Company's financial resources. There can also be no assurance that closure estimates prove to be accurate. The amounts recorded for reclamation costs are estimates unique to a property based on estimates provided by independent consulting engineers and the Company's assessment of the anticipated timing of future reclamation and remediation work required to comply with existing laws and regulations. Actual costs incurred in future periods could differ from amounts estimated. Additionally, future changes to environmental laws and regulations could affect the extent of reclamation and remediation work required to be performed by the Company. Any such changes in future costs could materially impact the amounts charged to operations for reclamation and remediation.

Climate change regulations may become more onerous over time as governments implement policies to further reduce carbon emissions, including the implementation of taxation regimes based on aggregate carbon emissions. Some of the costs associated with reducing emissions can be offset by increased energy efficiency and technological innovation. However, the cost of compliance with environmental regulation and changes in environmental regulation has the potential to result in increased costs of operations, reducing the potential profitability of the Company's future operations.

Due to increased global attention regarding the use of cyanide in mining operations, regulations may be imposed restricting or prohibiting the use of cyanide and other hazardous substances in mineral processing activities. If such legislation were to be adopted in a region in which the Company relies on the use of

cyanide, it would have a significant adverse impact on the Company's results of operations and financial condition as there are few, if any, substitutes for cyanide in extracting metals from certain types of ore.

While the Company intends to fully comply with all applicable environmental and health and safety regulations there can be no assurance that the Company has been or will at all times be in complete compliance with such laws, regulations and permits, or that the costs of complying with current and future environmental and health and safety laws and permits will not materially and adversely affect the Company's future business, results of operations or financial condition.

Laws and regulations

The Company's exploration activities are subject to extensive federal, provincial, state and local laws and regulations governing prospecting, development, production, exports, taxes, labour standards, occupational health and safety, mine safety and other matters in all the jurisdictions in which it operates. These laws and regulations are subject to change, can become more stringent and compliance can therefore become more costly. These factors may affect both the Company's ability to undertake exploration and development activities in respect of future properties in the manner contemplated, as well as its ability to continue to explore, develop and operate those properties in which it currently has an interest or in respect of which it has obtained exploration and development rights to date. The Company applies the expertise of its management, advisors, employees and contractors to ensure compliance with current laws and relies on its land men and legal counsel in both Mexico and Canada.

Failure to comply with applicable laws and regulations may result in civil or criminal fines or penalties or enforcement actions, including orders issued by regulatory or judicial authorities enjoining, curtailing or closing operations or requiring corrective measures, installation of additional equipment or remedial actions, any of which could result in the Company incurring significant expenditures. The Company may also be required to compensate private parties suffering loss or damage by reason of a breach of such laws, regulations or permitting requirements. It is also possible that future laws and regulations, or a more stringent enforcement of current laws and regulations by governmental authorities, could cause additional expense, capital expenditures, restrictions on or suspensions of our operations and delays in the exploration and development of Ixtaca.

In December 2020, the Company received notification from SEMARNAT that its environmental permit application (defined above as the "MIA") for the Ixtaca Project submitted in 2019 did not receive approval. There is no assurance that any future MIA permit application will be successful. Such an application may be subject to challenge or litigation by third parties, which may delay any decision in respect of the MIA application or which may inhibit the Company's ability to proceed with the Ixtaca Project even in the event of a positive outcome to the planned resubmitted MIA application. Under Mexican law, in addition to the MIA permit, a number of additional permits from Federal, State, and Municipal authorities, including a Change of Use of Land permit, an explosives permit, a water usage permit, and permits relating to powerline construction and electrical use, among others, will be required before proceeding to construction and operation of the Ixtaca Project.

Until the MIA is approved, for which there is significant uncertainty about time and outcome, and other necessary permits as described herein are obtained, any funds raised by the Company cannot be used to proceed to construction and operation of the Ixtaca Project and may be used for working capital, including expenditures relating to permitting costs, exploration and drilling activities, land acquisition, mill storage, community activities within the social area of impact of the project and contingencies.

Political, economic and social environment

The Company's mineral properties may be adversely affected by political, economic and social uncertainties which could have a material adverse effect on the Company's results of operations and financial condition. Areas in which the Company holds or may acquire properties may experience local political unrest and disruption which could potentially affect the Company's projects or interests. Changes in leadership, social or political disruption or unforeseen circumstances affecting political, economic and social structure could adversely affect the Company's property interests or restrict its operations. The

Company's mineral exploration and development activities may be affected by changes in government regulations relating to the mining industry and may include regulations on production, price controls, labour, export controls, income taxes, expropriation of property, environmental legislation and safety factors.

Any shifts in political attitudes or changes in laws that may result in, among other things, significant changes to mining laws or any other national legal body of regulations or policies are beyond the control of the Company and may adversely affect its business. The Company faces the risk that governments may adopt substantially different policies, which might extend to the expropriation of assets or increased government participation in the mining sector. In addition, changes in resource development or investment policies, increases in taxation rates, higher mining fees and royalty payments, revocation or cancellation of mining concession rights or shifts in political attitudes in Mexico may adversely affect the Company's business.

The Company's relationship with communities in which it operates is critical to the development of the Ixtaca project. Local communities may be influenced by external entities, groups or organizations opposed to mining activities. In recent years, anti-mining NGO activity in Mexico has increased. These NGOs have taken such actions as road closures, work stoppages and law suits for damages. These actions relate not only to current activities but often in respect to the mining activities by prior owners of mining properties. Such actions by NGOs may have a material adverse effect on the Company's operations at the Ixtaca project and on its financial position, cash flow and results of operations.

Risks related to International Labour Organization ("ILO") Convention 169 Compliance

The Company may, or may in the future, operate in areas presently or previously inhabited or used by indigenous peoples. As a result, the Company's operations are subject to national and international laws, codes, resolutions, conventions, guidelines and other similar rules respecting the rights of indigenous peoples, including the provisions of ILO Convention 169. ILO Convention 169 mandates, among other things, that governments consult with indigenous peoples who may be impacted by mining projects prior to granting rights, permits or approvals in respect of such projects. Therefore, consultation with indigenous communities by Mexican authorities and the Company may be required for the Ixtaca Project.

ILO Convention 169 has been ratified by Mexico. It is possible however that Mexico may not (i) have implemented procedures to ensure their compliance with ILO Convention 169 or (ii) have complied with the requirements of ILO Convention 169 despite implementing such procedures.

As noted below under "Title to Mineral Properties", Mexico's SCJN has recently determined that before issuing Almaden's mineral titles, the Ministry of the Economy should have provided for a consultation procedure with relevant indigenous communities. The decision orders the Ministry of the Economy to declare Almaden's mineral titles ineffective ("*insubsistentes*") and to issue them following the Ministry's compliance with its obligation to carry out the necessary procedures to consult with indigenous communities. The decision will take effect at the time of official notification of the decision to the Company which is expected in April 2022.

The standards for local implementation of the obligations assumed by Mexico under ILO Convention 169 regarding the human right to free, prior, informed consultation of indigenous communities are currently evolving. The draft SCJN decision may halt or result in a significant delay in project development notwithstanding the extensive engagement already conducted by the Company in relevant communities.

Government compliance with ILO Convention 169 can result in delays and significant additional expenses to the Company arising from the consultation process with indigenous peoples in relation to the Company's exploration, mining or development projects. Moreover, any actual or perceived past contraventions, or potential future actual or perceived contraventions, of ILO Convention 169 by Mexico creates a risk that the permits, rights, approvals, and other governmental authorizations that the Company has relied upon, or may in the future rely upon, to carry out its operations or plans could be challenged by or on behalf of indigenous peoples.

Such challenges may result in, without limitation, additional expenses with respect to the Company's operations, the suspension, revocation or amendment of the Company's rights or mining, environmental or

export permits, a delay or stoppage of the Company's development, exploration or mining operations, the refusal by governmental authorities to grant new permits or approvals required for the Company's continuing operations until the settlement of such challenges, or the requirement for the responsible government to undertake the requisite consultation process in accordance with ILO Convention 169.

As a result of the inherent uncertainty in respect of such proceedings, the Company is unable to predict what the results of any such challenges would be; however, any ILO Convention 169 proceedings relating to the Company's operations in Mexico may have a material adverse effect on the business, operations, and financial condition of the Company.

As a result of social media and other web-based applications, companies today are at much greater risk of losing control over how they are perceived

Damage to the Company's reputation can be the result of the actual or perceived occurrence of any number of events, and could include any negative publicity, whether true or not. Although the Company places a great emphasis on protecting its image and reputation, it does not ultimately have direct control over how it is perceived by others. Reputation loss may lead to increased challenges in developing and maintaining community relations, decreased investor confidence and act as an impediment to the Company's overall ability to advance its projects, thereby having a material adverse impact on the Company's business, financial condition or results of operations.

The Company may be subject to legal proceedings that arise in the ordinary course of business

Due to the nature of its business, the Company may be subject to regulatory investigations, claims, lawsuits and other proceedings in the ordinary course of its business. The Company's operations are subject to the risk of legal claims by employees, unions, contractors, lenders, suppliers, joint venture partners, shareholders, governmental agencies or others through private actions, class actions, administrative proceedings, regulatory actions or other litigation. Plaintiffs may seek recovery of very large or indeterminate amounts, and the magnitude of the potential loss relating to such lawsuits may remain unknown for substantial periods of time. Defense and settlement costs can be substantial, even with respect to claims that have no merit. The results of these legal proceedings cannot be predicted with certainty due to the uncertainty inherent in litigation, including the effects of discovery of new evidence or advancement of new legal theories, the difficulty of predicting decisions of judges and juries and the possibility that decisions may be reversed on appeal. The litigation process could, as a result, take away from the time and effort of the Company's management and could force the Company to pay substantial legal fees or penalties. There can be no assurances that the resolutions of any such matters will not have a material adverse effect on the Company's business, financial condition and results of operations.

Title to mineral properties

While the Company has investigated title to its mineral properties, this should not be construed as a guarantee of title. The properties may be subject to prior unregistered agreements or transfers and title may be affected by undetected defects. Title to Almaden's mining concessions may also be adversely affected by the Amparo as discussed below.

There is a risk that title to the mining concessions, the surface rights and access rights comprising Ixtaca and the necessary infrastructure, may be deficient or subject to additional disputes. The procurement or enforcement of such rights, or any dispute with respect to such rights, can be costly and time consuming. In areas where there are local populations or land owners, it may be necessary, as a practical matter, to negotiate surface access. Even in the event that the Company has the legal right to access the surface and carry on construction and mining activities, the Company may not be able to negotiate satisfactory agreements with existing landowners/occupiers for such access, and therefore it may be unable to carry out activities as planned. In addition, in circumstances where such access is denied, or no agreement can be reached, this could have a material adverse effect on the Company and the Company may need to rely on the assistance of local officials or the courts in such jurisdictions or pursue other alternatives, which may suspend, delay or impact mining activities as planned.

There is also a risk that the Company’s exploration, development and mining authorizations and surface rights may be challenged or impugned by third parties. In addition, there is a risk that the Company will not be able to renew some or all its licenses in the future. Inability to renew a license could result in the loss of any project located within that license. As noted in our press releases dated April 15, 2019, February 27, 2020, April 14, 2021, February 17, 2022, April 27, 2022, and July 4, 2022, the Company’s Original Concessions (as defined below) have been the subject of legal proceedings (the “**Amparo**”, or “**Mineral Title Lawsuit**”). On April 7, 2015, the Ejido Tecoltemi filed the Amparo against Mexican mining authorities claiming that Mexico’s mineral title system is unconstitutional because indigenous consultation is not required before the granting of mineral title. Almaden’s two original mining concessions covering the Ixtaca project (the “**Original Concessions**”) (Figure 1) are the subject matter of the Amparo. The Original Concessions cover Almaden’s Ixtaca project and certain endowed lands of the Ejido (the “**Ejido Lands**”). The Ejido Lands overlap approximately 330 Ha of the far south-eastern corner of the Original Concessions and are not considered material to Almaden.

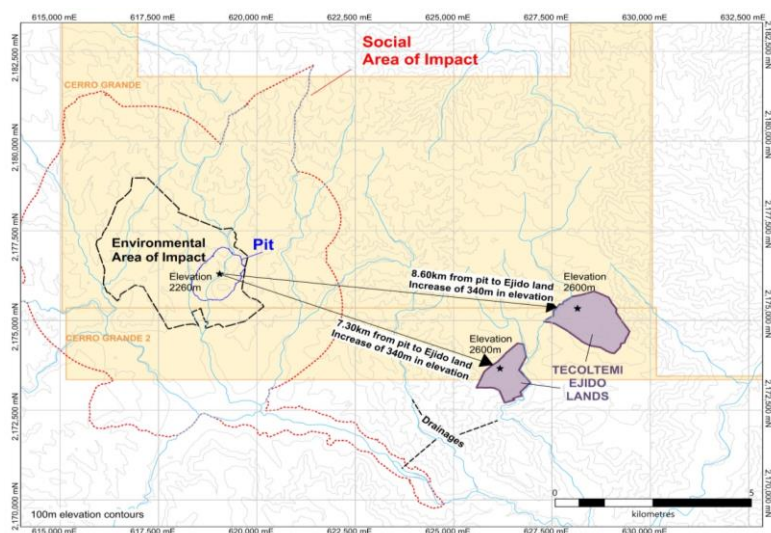


Figure 1: Original Concessions. Ixtaca environmental and social impact areas, and Ejido Lands

On February 17, 2022, the Company announced that the Supreme Court of Justice of the Nation (“SCJN”) reached a decision in respect of the Mineral Title Lawsuit involving the Company’s mineral claims, and on April 27, 2022, the Company announced that the SCJN had published its final decision on this matter.

The final decision of the SCJN determines that the Mexican mineral title law is constitutional, but that before issuing Almaden’s mineral titles, the Ministry of the Economy (“Economía”) should have provided for a consultation procedure with relevant indigenous communities. The decision orders Economía to declare Almaden’s mineral titles ineffective and to issue them to Almaden following the Ministry’s compliance with its obligation to carry out the necessary procedures to consult with indigenous communities. The decision takes note of the application of international law and jurisprudence to the implementation of consultation by Mexican authorities with relevant indigenous communities. The final decision provides additional detail to Mexican authorities regarding the procedures required to be followed by those authorities in the performance of indigenous consultation prior to the grant of mineral claims. The decision also clarifies that unless there is a significant impact on the rights of an indigenous community caused by the granting of the mineral title, such as relocation or something similar, title issuance is not dependent upon the consent of the indigenous community in question. As previously disclosed, the Company has no interest in holding mineral claims over the land of the indigenous community which initiated this legal case

On July 4, 2022, the Company confirmed that Economía has now been officially notified of the April, 2022 decision of the SCJN, and has in turn notified Almaden that the Company’s mineral titles relating to the Ixtaca project are “ineffective” but that the Company’s mineral title applications were filed in conformity with the Mexican mineral title law. The Company understands this to mean that the mineral title has reverted to application status, and that these applications preserve the mineral rights for Almaden but do not allow the

Company to engage in exploration, until such time as Economía completes its court-ordered indigenous consultation in the area of the mineral title applications.

Almaden intends to interact with Mexican government officials and local community officials in order to facilitate to the extent possible the government’s execution of its responsibilities in the issuance of the mineral titles. At present there is no timeline for the consultation process. At present there is no timeline for consultation by Economía with indigenous communities.

Background to Amparo

Shortly after the Amparo was filed in 2015, a lower court ordered the suspension of Almaden from conducting exploration and exploitation work over those portions of the Original Concessions which overlap with the Ejido Lands.

Mineral tenure over the Ejido Lands is not material to Almaden. The Ejido Lands do not overlap the Ixtaca project or its environmental or social area of impact. Almaden has never tried to negotiate access to the Ejido Lands, never conducted exploration work on the Ejido Lands, and has no interest in conducting any future exploration or development work over the Ejido Lands. The Ejido Lands are in a different drainage basin than the Ixtaca project and the Company does not need to travel through the Ejido Lands to access the Ixtaca project.

The standards for local implementation of the obligations assumed by Mexico under ILO Convention 169 regarding the human right to free, prior, informed consultation of indigenous communities are currently evolving. The draft Amparo ruling may halt or result in a significant delay in project development notwithstanding the extensive engagement already conducted by the Company in relevant communities.

Claim Reduction Efforts

In 2015, after learning about the Amparo, Almaden commenced a process to voluntarily cancel approximately 7,000 Ha of its Original Concessions, including the area covering the Ejido Lands, to assure the Ejido that Almaden would not interfere with the Ejido Lands, and to reduce Almaden’s land holding costs.

Almaden divided the Original Concessions into nine smaller concessions, which included two smaller mining concessions which overlapped the Ejido Lands (the “**Overlapping Concessions**”) (see Figure 2) and then voluntarily cancelled the Overlapping Concessions (see Figure 3 – which shows only the “**New Concessions**”). The applicable Mexican mining authorities issued the New Concessions and accepted the abandonment of the Overlapping Concessions in May and June of 2017 after the issuance of a Court Order.

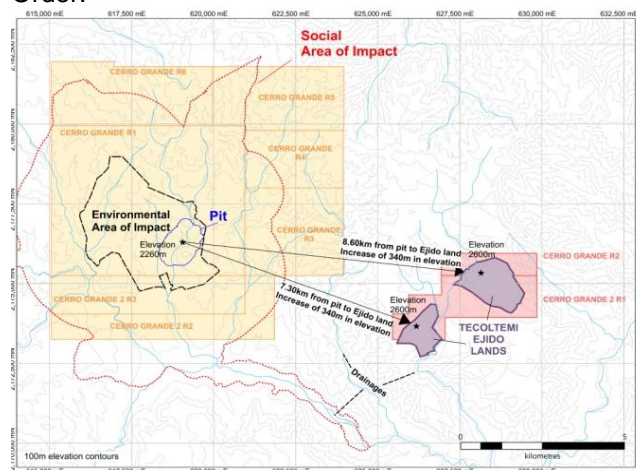


Figure 2: New and overlapping concessions

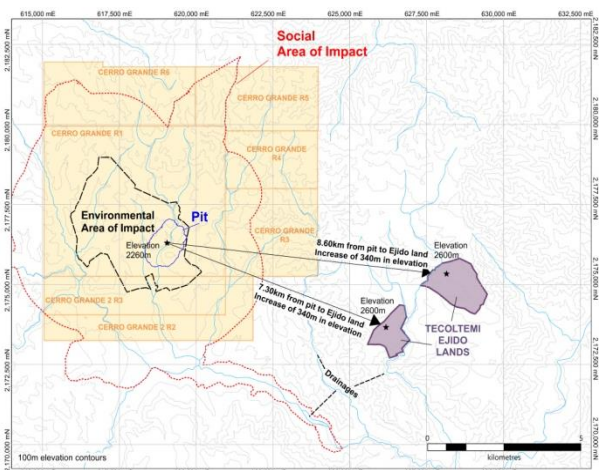


Figure 3: New Concessions.

In June 2017, the Ejido Tecoltemi, the complainant in the Amparo, filed a legal complaint about the court order leading to the New Concessions, and on February 1, 2018, the court reviewing the complaint ruled the Ejido's complaint was founded, and sent the ruling to the court hearing the Amparo.

On December 21, 2018, the General Directorate of Mines issued a resolution, which has never been officially notified to the Company, that the New Concessions are left without effect, and the Original Concessions are in full force and effect (the "**December Communication**").

On February 13, 2019, the General Directorate of Mines delivered, to the court hearing the Amparo, mining certificates stating that the Original Concessions are valid, and the New Concessions are cancelled.

On June 10, 2019, Almaden's subsidiary appealed the December Communication, and subsequent cancellation of the New Concessions. On September 26, 2019, the lower court refused to hear the appeal, but on October 14, 2019, a higher court agreed to hear the appeal.

In communications with the lower court and mineral title certificates issued by the General Directorate of Mines directly to Almaden on December 16, 2019 (the "**December 2019 Certificates**"), the applicable Mexican records reflected the position that the Original Concessions (the subject matter of the Amparo) are active and owned by Almaden (through its Mexican subsidiary) and the New Concessions were left without effect. It should be noted that the Mexican mining authorities also indicated in the December 2019 Certificates that their position would be subject to the final resolution of the Amparo.

On January 21, 2020, the Company filed an administrative challenge against the Mexican mining authorities' issuance of the December 2019 Certificates, which represented the first time that Almaden had been directly notified of any changes in its mineral tenure.

Almaden believes that the December Communication from the Mexican mining authorities is the basis for the recorded change in its mineral tenure. The Company's Mexican counsel advised that the December Communication has no legal effect as it was only provided to the lower court, was never officially served on the Company and was not issued by an official possessing the necessary legal authority. While the December Communication is dated December 21, 2018, the Company first became aware of it in May, 2019 through a review of court documents.

On December 1, 2020, the higher court denied the Company's October 14, 2019 appeal, which objected to the reinstatement by the Mexican mining authorities of the Company's Original Concessions. This court decision upheld the action of Mexican mining authorities that reinstated the Original Concessions as the Company's sole mineral claims over the Ixtaca Project, and left the New Concessions the Company was awarded in 2017 as held without effect. However, the decision also stated that the Company had the right to defend the New Concessions through the applicable legal procedures (which have been initiated through the two Administrative Challenges referred to below).

As previously reported, the Company has initiated two Administrative Challenges against the Mexican mining authorities for revoking the Company's lawfully reduced New Concessions. These challenges are based in part on Mexican legal advice that the Company cannot be forced to own mineral rights that it does not wish to own. These Administrative Challenges remain in process.

As noted in Almaden's July 4, 2022 press release, the Company has received official notification from Economia that the Company's mineral titles relating to the Ixtaca project are currently "ineffective" but that the Company's mineral title applications were filed in conformity with the Mexican mineral title law. The Company understands this to mean that the mineral title has reverted to application status, and that these applications preserve the mineral rights for Almaden but do not allow the Company to engage in exploration, until such time as Economia completes its court-ordered indigenous consultation in the area of the mineral title applications. The Company has been filing its taxes and assessment reports on the basis of the reduced area defined by the New Concessions. These taxes have been accepted by the Mexican mining authorities, and Almaden has not received any notifications from the Mexican mining authorities regarding taxes on the Original Concessions.

Possible dilution to present and prospective shareholders

The Company's plan of operation, in part, contemplates the financing of its business by the issuance of securities and possibly, incurring debt. Any transaction involving the issuance of previously authorized but unissued shares of common stock, or securities convertible into common stock, would result in dilution, possibly substantial, to present and prospective holders of common stock. Likewise, any debt, royalty, or streaming transaction would result in dilution, possibly substantial, to existing shareholders' exposure to the potential cash flows generated from the Company's projects.

Material risk of dilution presented by large number of outstanding share purchase options and warrants

At August 5, 2022, there were 12,545,000 stock options and 17,448,504 warrants outstanding. Directors and officers hold 10,450,000 of the options and 2,095,000 are held by employees and consultants of the Company. Directors and officers hold 568,500 of the warrants.

Trading volume

The relatively low trading volume of the Common Shares reduces the liquidity of an investment in the Common Shares.

Volatility of share price

Market prices for shares of early stage companies are often volatile. Factors such as announcements of mineral discoveries or discouraging exploration results, changes in financial results, and other factors could have a significant effect on share price.

Competition

There is competition from other mining companies with operations similar to Almaden. Many of the companies with which it competes have operations and financial strength greater than the Company.

Dependence on management

The Company depends heavily on the business and technical expertise of its management.

Conflict of interest

Some of the Company's directors and officers are directors and officers of other natural resource or mining-related companies. These associations may give rise from time to time to conflicts of interest. As a result of such conflict, the Company may miss the opportunity to participate in certain transactions.

Impairment of Exploration and Evaluation Assets

The Company assesses its exploration and evaluation assets quarterly to determine whether any indication of impairment exists. Common indications of impairment, which is often subjective, include but are not limited to, that the right to explore the assets has expired or will soon expire and is not expected to be renewed, that substantive expenditure of further exploration is not planned, or that results are not compelling enough to warrant further exploration by the Company.

At June 30, 2022, the Company concluded that no impairment indicators existed with respect to its exploration and evaluation assets and no impairment of exploration and evaluation assets was recognized.

SUMMARY OF QUARTERLY RESULTS

The following tables provide selected financial information for the Company's eight most recently completed fiscal quarters, stated in Canadian dollars in accordance with IFRS:

	Quarter Ended Jun 30, 2022 (\$)	Quarter Ended Mar 31, 2022 (\$)	Quarter Ended Dec 31, 2021 (\$)	Quarter Ended Sep 30, 2021 (\$)
Revenue	Nil	Nil	Nil	Nil
Other income	851,737	111,631	989,493	1,075,244
Loss and comprehensive loss	(926,375)	(1,139,918)	(489,893)	(567,793)
Basic & diluted net loss per share	(0.01)	(0.01)	(0.00)	(0.01)
Total assets	86,115,458	86,602,146	87,232,290	87,444,274
Total long term liabilities	6,260,352	6,652,523	6,457,408	5,940,840
Cash dividends declared	Nil	Nil	Nil	Nil

	Quarter Ended Jun 30, 2021 (\$)	Quarter Ended Mar 31, 2021 (\$)	Quarter Ended Dec 31, 2020 (\$)	Quarter Ended Sep 30, 2020 (\$)
Revenue	Nil	Nil	Nil	Nil
Other income	710,990	776,137	549,543	429,516
Loss and comprehensive loss	(241,648)	(1,054,779)	(1,054,385)	(219,048)
Basic & diluted net loss per share	(0.00)	(0.01)	(0.01)	(0.00)
Total assets	87,736,681	88,395,787	76,448,771	76,889,227
Total long term liabilities	6,455,418	6,648,597	4,688,836	4,873,158
Cash dividends declared	Nil	Nil	Nil	Nil

Quarterly variances in other income are dependent on the interest income earned from various levels of cash balances, financing activities related to the gold loan and cost recoveries from administrative services earned from Azucar and Almadex. The main changes in loss and comprehensive loss include share-based payments relating to the fair values of stock options granted, professional fees relating to the MIA application, unrealized gain on warrant liability adjusted for fair value and foreign exchange gain (loss) from foreign exchange rate fluctuations. Further details are discussed in Review of Operations and Financial Results section below.

Review of Operations and Financial Results

Results of Operations for the three months ended June 30, 2022 compared to the three months ended June 30, 2021

For the three months ended June 30, 2022, the Company recorded a loss and comprehensive loss of \$926,375, or \$0.01 per common share, compared to a loss and comprehensive loss of \$241,648, or \$0.00 per common share, for the three months ended June 30, 2021. The increase in loss and comprehensive loss of \$684,727 was primarily a result of a \$825,474 increase in operating expenses offset by a \$140,747 increase in other income.

As the Company is in development stage, it has no revenue from mining operations. Other income of \$851,737 (2021 - \$710,990) during the three months ended June 30, 2022 relates primarily to the revaluation of the unrealized gain on warrant liability of \$548,215 (2021 - \$241,426). The change in unrealized gain on warrant liability of \$306,789 is due to the decrease in the Company's share price to calculate the fair value using the Black-Scholes Pricing Model. Other contributing factors to an increase in other income is the foreign exchange gain of \$152,333 compared to a foreign exchange loss of \$264,623 same time last year. The foreign exchange gain is mainly the result of unrealized gain on USD cash balances translated into Canadian dollar.

The Company has an administrative services agreement with these two companies whereby overhead and salary expenses are proportionally allocated as described under the heading "Transactions with Related Parties". Amounts earned from administrative service fees depends on the business activities of each company. During Q2 2022, the Company had a decrease in administrative services fees earned from Azucar of \$37,705 (2021 - \$117,075), and an increase in administrative service fees from Almadex of \$182,741 (2021 - \$117,482) due to operational activities within each company.

Operating expenses were \$1,778,112 during the three months ended June 30, 2022 (2021 - \$952,638). Certain operating expenses were reported on a gross basis and recovered through other income from the administrative services agreements with Azucar and Almadex. The increase in operating expenses of \$825,474 is mainly due to an increase of \$740,800 from stock option grant in 2022 Q2 compared to 2021 Q2 in share-based payments, an increase of professional fees of \$72,668, an increase in salary and benefits of \$15,064 and an increase in director fees of \$36,250 which all reflects the increase in business activities compared to the same time last year during the COVID-19 related lockdown in Mexico. Professional fees and salary and benefits were recovered from the administrative services agreement.

Results of Operations for the six months ended June 30, 2022 compared to the six months ended June 30, 2021

For the six months ended June 30, 2022, the Company recorded a loss and comprehensive loss of \$2,066,293, or \$0.02 per common share, compared to a loss and comprehensive loss of \$1,296,427, or \$0.01 per common share, for the six months ended June 30, 2021. The increase in loss and comprehensive loss of \$769,866 was primarily a result of a \$523,759 decrease in other income and \$246,107 increase in operating expenses.

As the Company is in development stage, it has no revenue from mining operations. Other income of \$963,368 (2021 - \$1,487,127) during the six months ended June 30, 2022 relates primarily to the revaluation of the unrealized gain on warrant liability of \$383,219 (2021 - \$617,509) and the decrease in administrative services fees earned from Azucar of \$74,483 (2021 - \$280,598), and Almadex of \$361,312 (2021 - \$281,005). The Company has an administrative services agreement with these two companies whereby overhead and salary expenses are proportionally allocated as described under the heading "Transactions with Related Parties". Amounts earned from administrative service fees depends on the business activities of each company. The change in unrealized gain on warrant liability of \$234,290 in 2022 Q2 compared to 2021 Q2 relates to the decrease in the Company's share price to calculate the fair value using the Black-Scholes Pricing Model.

Operating expenses were \$3,029,661 during the six months ended June 30, 2022 (2021 - \$2,783,554). Certain operating expenses were reported on a gross basis and recovered through other income from the administrative services agreements with Azucar and Almadex. The increase in operating expenses of \$246,107 is mainly due to \$117,050 from stock option grant in 2022 Q2 compared to 2021 Q2 in share-based payments, an increase in professional fees of \$39,823, an increase in salary and benefits of \$42,592, and increase of directors' fees of \$72,500 and an increase in office and license of \$10,968 which all reflects the increase in business activities the same time last year during the COVID-19 related lockdown in Mexico. Professional fees, salary and benefits and office and license were recovered from the administrative services agreement.

LIQUIDITY AND CAPITAL RESOURCES

At June 30, 2022, the Company had working capital of \$8,642,068, including cash and cash equivalents of \$8,090,088, compared to working capital of \$12,976,386, including cash and cash equivalents of \$12,381,826 at June 30, 2021. The decrease in working capital of \$4,334,318 is due the cash balances being used for expenditures in exploration and evaluation assets and corporate affairs.

The Company has long term liabilities of \$6,260,352 at June 30, 2022 compared to \$6,457,408 at December 31, 2021 that relates to deferred income tax liability from the Mexican income tax and Special Mining Duty associated with the Ixtaca project of \$1,749,023 (December 31, 2021 - \$1,749,023). Other components of long-term liabilities relate to long-term portion of lease liabilities of \$423,246 (December 31, 2021 - \$465,930) for office lease, gold loan payable of \$3,502,343 (December 31, 2021 - \$3,227,545) entered with Almadex on May 14, 2019, warrant liability of \$240,071 (December 31, 2021 - \$623,290) for the warrants issued pursuant to the registered direct offering on March 18, 2021 and derivative financial liabilities of \$345,669 (December 31, 2021 - \$391,620) related to the gold loan.

On February 25, 2021, the Company filed a final short form base shelf prospectus in each of the provinces and territories of Canada, other than Québec (the "Shelf Prospectus"), and a corresponding registration

statement on Form F-10 (the “Registration Statement”) with the United States Securities and Exchange Commission (the “SEC”) under the U.S./Canada Multijurisdictional Disclosure System.

The Shelf Prospectus and Registration Statement allow Almaden to make offerings of common shares, warrants, subscription receipts and/or units up to an aggregate total of US\$60 million during the 25-month period that the Shelf Prospectus remains effective. Such securities may be offered in amounts, at prices and on terms to be determined based on market conditions at the time of sale and set forth in one or more shelf prospectus supplement(s). Information regarding the use of proceeds from a sale of such securities will be included in the applicable prospectus supplement.

Copies of the Shelf Prospectus can be found under the Company’s SEDAR profile at www.sedar.com; copies of the Registration Statement can be found on EDGAR at www.sec.gov; and copies of such documents may be obtained by request to the Corporate Secretary of Almaden Minerals Ltd.: 201-1333 Johnston St., Vancouver, British Columbia V6H 3R9, Canada (TEL: 604.689.7644), or to info@almadenminerals.com.

Three months ended June 30, 2022

Net cash used in operating activities during the three months ended June 30, 2022 was \$415,771 (2021 - \$687,888), after adjusting for non-cash activities.

Net cash used in investing activities during the three months ended June 30, 2022 was \$539,864 (2021 - \$753,687) related to expenditures in exploration and evaluation assets while waiting for its development permits.

Net cash used in financing activities during the three months ended June 30, 2022 was \$31,331 (2021 - \$118,166).

Management estimates that the current cash position and potential future cash flows will be sufficient for the Company to carry out its business for the upcoming year.

Six months ended June 30, 2022

Net cash used in operating activities during the six months ended June 30, 2022 was \$1,064,418 (2021 - \$818,326), after adjusting for non-cash activities.

Net cash used in investing activities during the six months ended June 30, 2022 was \$948,476 (2021 - \$1,437,750) related to expenditures in exploration and evaluation assets while waiting for its development permits.

Net cash used in financing activities during the six months ended June 30, 2022 was \$67,394. Net cash from financing activities during the six months ended June 30, 2021 was \$12,103,204 as a result of registered direct offer of \$11,610,581 and options exercised of \$564,750, and repayment of leasing of \$67,394 (2021- \$72,127).

Management estimates that the current cash position and potential future cash flows will be sufficient for the Company to carry out its business for the upcoming year.

USE OF PROCEEDS FROM MARCH 2021 FINANCING

The net proceeds to the Company from the Offering were approximately US\$9,630,500 after deducting the Agent’s Fee of US\$669,500 in aggregate, but before deducting the expenses of the Offering.

The Company intends to use the majority of the net proceeds of the Offering for preparation and submission of applications for permits required to commence construction of the Ixtaca Project, additional engineering work, exploration activities, legal and consulting costs, and for general working capital purposes as follows:

Items	Expressed in millions of dollars	Budget USD	Budget CAD	Actual Use CAD March 18, 2021 to June 30, 2022	Variance CAD
1.	Permitting and related fees and expenses	2.24	2.88	(0.90)	1.98
2.	Detailed project engineering and related expenses	2.67	3.42	(1.23)	2.19
3.	Exploration drilling	0.78	1.00	(0.75)	0.25
4.	Assay costs	0.47	0.60	(0.02)	0.58
5.	Geology, mapping, geophysics	0.16	0.21	(0.10)	0.11
6.	Mineral leases	0.12	0.15	(0.16)	(0.01)
7.	Marketing, finance, legal, and administration costs for the next 12 months	1.48	1.90	(2.04)	(0.14)
8.	Public company costs for the next 12 months	0.23	0.29	(0.17)	0.12
9.	General working capital	1.48	1.90	(1.04)	0.86
Total		\$ 9.63	\$ 12.35	(6.41)	5.94

The above noted allocation represents the Company's intentions with respect to its use of proceeds based on knowledge, planning and expectations of management of the Company as at March 17, 2021, when the Company filed its prospectus supplement to its base shelf prospectus dated February 25, 2021. Actual expenditures from March 18, 2021 to June 30, 2022 are reflected and compared to budget. The variance reported above will diminish over time as if and when the Company advances its permitting efforts. The variance for marketing, finance, legal and administration is over budget due to actual expenditures reported over 15 months compared to 12 months in the budget. There can be no assurances the above objectives will be completed as circumstances may change and for business reasons, a reallocation of funds may be necessary in order for the Company to achieve its stated business objectives. See "Risk Factors".

DISCLOSURE OF OUTSTANDING SHARE DATA

Common Shares

The authorized share capital of the Company consists of an unlimited number of common shares without par value. As of date of this MD&A, there were 137,221,408 common shares issued and outstanding and 171,219,158 common shares outstanding on a diluted basis. The Company had the following common shares outstanding as at the dates indicated:

	Number of Common Shares Issued & Outstanding	Share Capital Amount
December 31, 2020	120,650,254	\$131,189,978
December 31, 2021	137,221,408	\$141,040,654
August 5, 2022	137,221,408	\$141,040,654

Warrants

The following table summarizes information about warrants outstanding at August 5, 2022:

Expiry date	Exercise price	December 31, 2021	Issued	Exercised	Expired	August 5, 2022
June 7, 2022	\$1.35	4,720,000	-	-	(4,720,000)	-
March 27, 2023	\$0.50	5,489,658	-	-	-	5,489,658
August 6, 2023	\$0.90	3,100,000	-	-	-	3,100,000
March 18, 2024	USD\$ 0.80	8,358,846	-	-	-	8,358,846
May 14, 2024	\$1.50	500,000	-	-	-	500,000
Warrants outstanding and exercisable		22,168,504	-	-	(4,720,000)	17,448,504
Weighted average exercise price		\$ 0.95	-	-	\$ 1.35	\$ 0.84

The table in Note 10(c) to the Company's audited annual consolidated financial statements for the year ended December 31, 2021 summarizes information about warrants outstanding as at December 31, 2021.

Stock Options

The Company grants directors, officers, employees, and contractors options to purchase common shares under its stock option plan. This plan and its terms, as well as options outstanding as at December 31, 2021, are detailed in Note 10(d) to the Company's audited annual consolidated financial statements for the year ended December 31, 2021.

The following table summarizes information about stock options outstanding at August 5, 2022:

Expiry date	Exercise price	December 31, 2021	Granted	Exercised	Expired	August 5, 2022
March 4, 2022	\$ 0.47	1,125,000	-	-	(1,125,000)	-
April 30, 2022	\$ 0.41	100,000	-	-	(100,000)	-
April 30, 2022	\$ 0.58	220,000	-	-	(220,000)	-
May 31, 2022	\$ 0.62	600,000	-	-	(600,000)	-
June 9, 2022	\$ 0.64	1,980,000	-	-	(1,980,000)	-
October 3, 2022	\$ 1.13	860,000	-	-	(105,000)	755,000
December 15, 2022	\$ 0.89	900,000	-	-	(30,000)	870,000
February 9, 2023	\$ 0.97	350,000	-	-	-	350,000
March 3, 2023	\$ 0.96	250,000	-	-	-	250,000
March 31, 2023	\$ 0.68	1,975,000	-	-	-	1,975,000
May 8, 2023	\$ 0.69	100,000	-	-	-	100,000
May 28, 2023	\$ 0.65	100,000	-	-	-	100,000
July 8, 2023	\$ 0.62	2,470,000	-	-	(50,000)	2,420,000
September 18, 2023	\$ 0.51	960,000	-	-	-	960,000
March 7, 2027	\$ 0.38	-	1,125,000	-	-	1,125,000
June 10, 2027	\$ 0.33	-	3,640,000	-	-	3,640,000
Options outstanding and exercisable		11,990,000	4,765,000	-	(4,210,000)	12,545,000
Weighted average exercise price		\$ 0.68	\$ 0.34	-	\$ 0.60	\$ 0.58

ENVIRONMENTAL PROVISIONS AND POTENTIAL ENVIRONMENTAL CONTINGENCY

The Company's mining and exploration activities are subject to various federal, provincial and state laws and regulations governing the protection of the environment. These laws and regulations are continually changing and generally becoming more restrictive. The Company conducts its operations so as to protect public health and the environment and believes its operations are in compliance with all applicable laws and regulations. The Company has made, and expects to make in the future, expenditures to comply with such laws and regulations. The Company estimates that future reclamation and site restoration costs based on the Company's exploration activities to date are not significant however the ultimate amount of reclamation and other future site restoration costs to be incurred in the future is uncertain.

OFF-BALANCE SHEET ARRANGEMENTS

The Company has no off-balance sheet arrangements.

CONTRACTUAL COMMITMENTS

The Company has no contractual commitments.

TRANSACTIONS WITH RELATED PARTIES

(a) Compensation of key management personnel

Key management includes members of the Board, the Chairman, the President and Chief Executive Officer, the Chief Financial Officer, the Executive Vice President, and the Vice President, Project Development. The net aggregate compensation paid or payable to key management for services after recovery from Azucar and Almadex (Note 11(b) of the June 30, 2022 condensed consolidated interim financial statements) was as follows:

Three months ended June 30, 2022	Fees	Share-based Payments	Total
Chairman ⁽¹⁾	\$ 18,600	\$ 110,000	\$ 128,600
President & CEO	38,812	264,000	302,812
CFO	28,125	49,500	77,625
Executive VP	28,125	4,400	32,525
VP Project Development	15,000	-	15,000
Directors	36,250	220,000	256,250
	\$ 164,912	\$ 647,900	\$ 812,812

Six months ended June 30, 2022	Fees	Share-based Payments	Total
Chairman ⁽¹⁾	\$ 49,800	\$ 380,250	\$ 430,050
President & CEO	77,625	110,000	187,625
CFO	56,250	127,000	183,250
Executive VP	56,250	81,900	138,150
VP Project Development	30,000	-	30,000
Directors	72,500	251,000	323,500
	\$ 342,425	\$ 950,150	\$ 1,292,575

Three months ended June 30, 2021	Fees	Share-based Payments	Total
Chairman ⁽¹⁾	\$ 24,000	\$ 30,000	\$ 54,000
President & CEO	34,500	-	34,500
CFO	23,500	-	23,500
Executive VP	22,200	-	22,200
VP Project Development	15,000	-	15,000
Directors	-	-	-
	\$ 119,200	\$ 30,000	\$ 149,200

Six months ended June 30, 2021	Fees	Share-based Payments	Total
Chairman ⁽¹⁾	\$ 30,000	\$ 30,000	\$ 60,000
President & CEO	43,125	122,500	165,625
CFO	29,375	118,750	148,125
Executive VP	27,750	109,750	137,500
VP Project Development	30,000	67,500	97,500
Directors	-	434,000	434,000
	\$ 160,250	\$ 882,500	\$ 1,042,750

- ⁽¹⁾ Effective May 1, 2019, the Chairman has deferred payment of his salary of \$8,000 per month. The Company owes \$256,000 to the Chairman as at June 30, 2022 (December 31, 2021 - \$256,000), which is recorded in accounts payable.

(b) Administration Services Agreements

The Company recovers a portion of rent, office and license expenses from Azucar pursuant to an Administrative Services Agreement dated May 15, 2015 and First Amending Agreement dated December 16, 2015 between the Company and Azucar.

The Company also recovers a portion of rent, office and license expenses from Almadex pursuant to an Administrative Services Agreement dated March 29, 2018 between the Company and Almadex.

During the three months ended June 30, 2022, the Company received \$37,705 (2021 - \$117,075) from Azucar for administrative services fees included in other income and received \$182,741 (2021 - \$117,482) from Almadex for administrative services fees included in other income.

During the six months ended June 30, 2022, the Company received \$74,483 (2021 - \$280,598) from Azucar for administrative services fees included in other income and received \$361,312 (2021 - \$281,005) from Almadex for administrative services fees included in other income.

At June 30, 2022, included in accounts receivable is \$14,304 (December 31, 2021 - \$15,063) due from Azucar, and \$89,118 (December 31, 2021 - \$69,298) due from Almadex in relation to expenses recoveries.

Under the Administrative Services Agreements, the Company is the sole and exclusive manager of Azucar and Almadex that provides general management services, office space, executive personnel, human resources, geological technical support, accounting and financial services at cost with no mark-up or additional direct charge. The three companies are considered related parties though common officers.

(c) Other related party transactions

At June 30, 2022, the Company accrued \$Nil (December 31, 2021 - \$72,130) payable to Almadex for exploration and drilling services in Mexico.

During the three and six months ended June 30, 2022, the Company employed the Chairman's daughter for a salary of \$10,325 and \$20,650 less statutory deductions (2021 - \$10,325 and \$20,650) for marketing and administrative services provided to the Company.

FINANCIAL INSTRUMENTS

The fair values of the Company's cash and cash equivalents, accounts receivable, and trade and other payables approximate their carrying values because of the short-term nature of these instruments. Significant assumptions are discussed in Critical Accounting Estimates section of this MD&A.

Except for warrant liability and derivative financial liabilities, the Company does not carry any financial instruments at fair value through profit or loss (FVTPL).

The Company is exposed to certain financial risks, including currency risk, credit risk, liquidity risk, interest rate risk, and commodity and equity price risk.

(a) Currency risk

The Company's property interests in Mexico make it subject to foreign currency fluctuations and inflationary pressures which may adversely affect the Company's financial position, results of operations and cash flows. The Company is affected by changes in exchange rates between the Canadian dollar, the US dollar and the Mexican Peso. The Company does not invest in foreign currency contracts to mitigate the risks.

As at June 30, 2022, the Company was exposed to foreign exchange risk through the following monetary assets and liabilities denominated in currencies other than the functional currency of the applicable subsidiary:

All amounts in Canadian dollars	US dollar	Mexican peso
Cash and cash equivalents	\$ 4,642,064	\$ 203,407
Accounts receivable and prepaid expenses	-	1,503
Gold in trust	927,698	-
Total assets	\$ 5,569,762	\$ 204,910
Trade and other payables	\$ 23,383	\$ 108,792
Gold loan payable	3,502,343	-
Derivative financial liabilities	345,669	-
Total liabilities	\$ 3,871,395	\$ 108,792
Net assets	\$ 1,698,367	\$ 96,118

A 10% change in the US dollar exchange rate relative to the Canadian dollar would change the Company's net loss by \$170,000.

A 10% change in the Mexican Peso exchange rate relative to the Canadian dollar would change the Company's net loss by \$10,000.

(b) Credit risk

The Company's cash and cash equivalents are held in large financial institutions, located in both Canada and Mexico. Cash equivalents mature at less than ninety days during the twelve months following the statement of financial position date. The Company's accounts receivable consist of amounts due from related parties which were subsequently collected.

To mitigate exposure to credit risk on cash and cash equivalents, the Company has established policies to limit the concentration of credit risk with any given banking institution where the funds are held, to ensure counterparties demonstrate minimum acceptable credit risk worthiness and ensure liquidity of available funds.

As at June 30, 2022, the Company's maximum exposure to credit risk was the carrying value of its cash and cash equivalents, and accounts receivable.

(c) Liquidity risk

Liquidity risk is the risk that the Company will not be able to meet its financial obligations as they fall due. The Company manages liquidity risk through the management of its capital structure. Trade and other payables are due within twelve months of the statement of financial position date.

(d) Interest rate risk

Interest rate risk is the risk that the fair value or future cash flows of a financial instrument will fluctuate because of changes in market interest rates. The Company is exposed to varying interest rates on cash and cash equivalents. The Company has no debt bearing variable interest rate.

A 1% change in the interest rate would change the Company's net loss by \$81,000.

(e) Commodity and equity price risk

The ability of the Company to explore its exploration and evaluation assets and the future profitability of the Company are directly related to the market price of gold and other precious metals. The

Company monitors gold prices to determine the appropriate course of action to be taken by the Company. Equity price risk is defined as the potential adverse impact on the Company's performance due to movements in individual equity prices or general movements in the level of the stock market.

(f) Classification of financial instruments

IFRS 13 establishes a fair value hierarchy that prioritizes the inputs to valuation techniques used to measure fair value as follows:

Level 1 – quoted prices (unadjusted) in active markets for identical assets or liabilities;

Level 2 – inputs other than quoted prices included in Level 1 that are observable for the asset or liability, either directly (i.e. as prices) or indirectly (i.e. derived from prices); and

Level 3 – inputs for the asset or liability that are not based on observable market data (unobservable inputs).

The following table sets forth the Company's financial assets measured at fair value by level within the fair value hierarchy.

	Level 1	Level 2	Level 3	Total
	\$	\$	\$	\$
Derivative financial liabilities	-	345,669	-	345,669
Warrant liability	-	240,071	-	240,071

Management of Capital

The Company considers its capital to consist of components of equity. The Company's objectives when managing capital are to safeguard the Company's ability to continue as a going concern in order to pursue the exploration of its exploration and evaluation assets and to maintain a flexible capital structure which optimizes the costs of capital at an acceptable risk.

The Company manages its capital structure and makes adjustments to it in light of changes in economic conditions and the risk characteristics of the underlying assets. To maintain or adjust the capital structure, the Company may attempt to issue new shares and, acquire or dispose of assets.

In order to maximize ongoing exploration efforts, the Company does not pay out dividends. The Company's investment policy is to invest its short-term excess cash in highly liquid short-term interest-bearing investments with short term maturities, selected with regards to the expected timing of expenditures from continuing operations.

The Company expects its current capital resources will be sufficient to carry out its exploration plans and operations for the foreseeable future. The Company is not subject to externally imposed capital requirements. There were no changes to the Company's approach to the management of capital during the period. The Company is not subject to externally imposed capital requirements.

CRITICAL ACCOUNTING ESTIMATES

The preparation of the Company's consolidated financial statements in conformity with IFRS requires management to make judgements and estimates that affect the reported amounts of assets and liabilities at the date of the consolidated financial statements and reported amounts of expenses during the reporting period. Based on historical experience and current conditions, management makes assumptions that are believed to be reasonable under the circumstances. These estimates and assumptions form the basis for judgements about the carrying value of assets and liabilities and reported amounts for revenues and expenses. Actual outcomes may differ from these judgements and estimates. These estimates and assumptions are also affected by management's application of accounting policies, which is contained in

Note 2 (d) of the December 31, 2021 annual consolidated financial statements. The impacts of such judgements and estimates are pervasive throughout the consolidated financial statements and may require accounting adjustments based on future occurrences. Revisions to accounting estimates are recognized in the period in which the estimate is revised and the revision affects both current and future periods.

Significant assumptions about the future, and other sources of judgements and estimates that management has made at the statement of financial position dates, that could result in a material adjustment to the carrying amounts of assets and liabilities in the event that actual results differ from assumptions made, relate to, but are not limited to, the following:

- the analysis of the functional currency for each entity of the Company determined by conducting an analysis of the consideration factors identified in IAS 21, “The Effect of Changes in Foreign Exchange Rates”. In concluding that the Canadian dollar is the functional currency of the parent and its subsidiary companies, management considered the currency that mainly influences the cost of providing goods and services in each jurisdiction in which the Company operates. As no single currency was clearly dominant, the Company also considered secondary indicators, including the currency in which funds from financing activities are denominated and the currency in which funds are retained;
- A global pandemic related to COVID-19 was declared in March 2020. The current and expected impacts on global commerce have been, and are anticipated to be, far-reaching. To date, there has been significant volatility in commodity prices and foreign exchange rates, restrictions on the conduct of business in many jurisdictions, including travel restrictions, and supply chain disruptions. There is significant ongoing uncertainty surrounding COVID-19 and the extent and duration of the impact that it may have;
- the estimated useful lives of property, plant and equipment which are included in the consolidated statements of financial position and the related depreciation included in profit or loss;
- the recoverability of the value of exploration and evaluation assets, which is recorded in the statements of financial position;
- the provision for income taxes which is included in profit or loss and composition of deferred income tax liability included in the consolidated statement of financial position and the evaluation of the recoverability of deferred tax assets based on an assessment of the Company’s ability to utilize the underlying future tax deductions against future taxable income prior to expiry of those deductions;
- the assessment of indications of impairment of each exploration and evaluation asset and property plant and equipment and related determination of the net realizable value and write-down of those assets where applicable;
- The estimated incremental borrowing rate used to calculate the lease liabilities;
- The estimated fair value of gold in trust; and
- The estimated initial fair value of gold loan payable.

In addition to the foregoing, the Company uses the Black-Scholes option pricing model to determine the fair value of options, warrants, and derivative financial liabilities in order to calculate share-based payments expense, warrant liability and the fair value of finders’ warrants and stock options. Certain inputs into the model are estimates that involve considerable judgment or could be affected by significant factors that are out of the Company’s control.

CHANGES IN ACCOUNTING POLICY, INCLUDING INITIAL ADOPTION

Application of new and revised accounting standards effective January 1, 2022

Certain new accounting standards and interpretations have been published that are effective from January 1, 2022; however, these standards have been assessed by the Company and are not expected to have a material impact on the Company's consolidated financial statements.

Changes in Internal Control over Financial Reporting

There were no changes in the Company's internal control over financial reporting that occurred during the period ended June 30, 2022 that materially affected, or that is reasonably likely to materially affect, the Company's internal control over financial reporting.

CAUTIONARY NOTES REGARDING FORWARD LOOKING STATEMENTS

This MD&A contains "forward-looking information" within the meaning of Canadian securities legislation and "forward-looking statements" within the meaning of the United States *Private Securities Litigation Reform Act of 1995* (collectively, "**forward-looking information**"). Forward-looking information contained herein is made as of the date of this document and the Company disclaims any obligation to update or revise any forward-looking information, whether as a result of new information, future events or results or otherwise, except as and to the extent required by applicable securities laws. Forward-looking information includes statements that use forward-looking terminology such as "plans", "expects", "budget", "estimates", "intends", or "believes", or variations of such words and phrases or statements that certain actions, events or results "may", "could", "would", "might" or "will be taken", "occur" or "be achieved" or the negative of these terms or comparable terminology. By their nature, forward-looking statements involve known and unknown risks, uncertainties and other factors which may cause actual results, performance or achievements of the Company to be materially different from any future results, performance or achievements expressed or implied by the forward-looking statements. Forward-looking statements included in this document include, but are not limited to, statements with respect to: anticipated results and developments in the Company's operations; planned exploration and development on the Company's Ixtaca gold and silver project on the Tuligtic Property (the "**Ixtaca Project**"); planned expenditures and budgets and the execution thereof; the feasibility of the Ixtaca Project; the Company's forecasts and expected cash flows; the Company's projected capital and operating costs; the Company's expectations regarding mining and metallurgical recoveries; mine life and production rates; disclosure regarding the permitting review process for the Ixtaca Project; the impact of legal actions in Mexico including the impact of the Amparo proceedings and SCJN decision, the timing of the official notification of that decision to the Company, that the decision clarifies that the Company's mineral rights at the Ixtaca project are protected while the mining authorities conduct any necessary consultations prior to granting formal title, the timing and procedures for any consultation by the Ministry of the Economy with indigenous communities and the timing and procedures for the Ministry of the Economy to issue mineral titles to Almaden; the Company's plans to re-submit a revised MIA to Secretaría de Medio Ambiente y Recursos Naturales' ("**SEMARNAT**"); the potential timing of the MIA resubmission; the Company's plans to complete an HRIA and timing thereof; plans to continue regional exploration in an effort to expand the known resource at the Ixtaca Project; the expected extension of the Rock Creek Mill storage; the impact of the project's proposed drystack tailing facilities, the Company's belief that the Ixtaca Project can be a showcase for modern, responsible mineral development in Mexico and define new ground in the realm of sustainable mining; the potential impact of ore sorting results on project economics and design; the potential for further discoveries within the Ixtaca Project area; disclosure regarding potential project financing; permitting time lines and requirements; requirements for additional capital and expected use of proceeds; the Company's cash resources and their adequacy to meet the Company's working capital and mineral exploration needs for its next fiscal year; the possible effect of changes in interest rates and exchange rates on the Company's future operations; the estimation of mineral reserves and mineral resources; the realization of mineral reserve estimates; the timing and amount of estimated future production; costs of production; capital expenditures; success of mining operations; environmental risks; unanticipated reclamation expenses; title disputes or claims; limitations on insurance coverage; the Company's outlook with respect to the price, demand and need for precious and other metals and any other

statement that may predict, forecast, indicate or imply future plans, intentions, levels of activity, results, performance or achievements. Forward-looking information is not a guarantee of future performance and is based upon a number of estimates and assumptions of management, in light of management's experience and perception of trends, current conditions and expected developments, as well as other factors that management believes to be relevant and reasonable in the circumstances, as of the date of this document including, without limitation, assumptions about: both Almaden's and the applicable Mexican authorities' legal positions; the permitting and legal regimes in Mexico; future economic and political conditions; the timing and costs of future activities on the Company's properties, including but not limited to development and operating costs in the event that a production decision is made; success, timing, accuracy and results of exploration and drilling programs (including metallurgical testing), development and environmental protection and remediation activities; stability and predictability in Mexico's mineral tenure, mining, environmental and agrarian laws and regulations, as well as their application and judicial decisions thereon; continued respect for the rule of law in Mexico; prices for gold, silver and base metals remaining as estimated; future currency exchange rates remaining as estimated; availability of funds; capital, decommissioning and reclamation estimates; prices for energy inputs, labour, materials, supplies and services (including transportation); no labour-related disruptions; the ability to secure and maintain title and ownership to properties and the surface rights necessary for operations; community support in the Ixtaca Project; the ability to comply with environmental, health and safety laws; favourable equity and debt capital markets; the ability to raise any necessary capital on reasonable terms to advance the development of the Ixtaca Project; expectations about the ability to acquire resources and/or reserves through acquisition and/or development; future metal prices; the current exploration, development, environmental and other objectives concerning the Ixtaca Project being achieved and other corporate activities proceeding as expected; that third party contractors and equipment, including the Rock Creek mill, will be available and operate as anticipated; the accuracy of any mineral reserve and mineral resource estimates; the timing and reliability of sampling and assay data; the accuracy of budgeted exploration and development costs and expenditures; the cut-off grades; the taxation policies which will apply to the Ixtaca Project being consistent with the Company's expectations; the price of other commodities such as fuel; rates and interest rates; operating conditions being favourable, including whereby the Company is able to operate in a safe, efficient and effective manner; political and regulatory stability; that all necessary governmental and third party approvals, licences and permits for the planned exploration, development and environmental protection activities will be obtained in a timely manner and on favourable terms; obtaining required renewals for existing approvals; sustained labour stability; positive relations with local groups and the Company's ability to meet any obligations under agreements with such groups; stability in financial and capital goods markets; and availability of equipment. While the Company considers these assumptions to be reasonable, the assumptions are inherently subject to significant business, social, economic, political, legal, regulatory, competitive and other risks and uncertainties, contingencies and other factors that could cause actual actions, events, conditions, results, performance or achievements to be materially different from those projected in the forward-looking information. Many assumptions are based on factors and events that are not within the control of the Company and there is no assurance they will prove to be correct. Furthermore, such forward-looking information involves a variety of known and unknown risks, uncertainties and other factors which may cause the actual plans, intentions, activities, results, performance or achievements of the Company to be materially different from any future plans, intentions, activities, results, performance or achievements expressed or implied by such forward-looking information. Such factors include, among others, risks related to: resource exploration and development; uncertainty in developing a commercially viable mining operation; impact of environmental impact assessment requirements on the Company's planned exploration and development activities on the Ixtaca Project; history of net losses; lack of cash flow and assurance of profitability; the need for additional capital; uncertainty of obtaining additional funding requirements; governmental regulations and the ability to obtain necessary licences and permits; possible dilution to present and prospective shareholders; the material risk of dilution presented by a large number of outstanding share purchase options and warrants; volatility of share price; mineral prices not supporting corporate profit; unfavourable laws and regulations; political risk in Mexico, crime and violence in Mexico; corruption; environmental risks, including environmental matters under Mexican rules and regulations; certainty of mineral title and the outcome of litigation; political, economic and social uncertainties; community relations; uncertainty of reserves and mineralization estimates; risks related to mineral properties being subject to prior unregistered agreements, transfers or claims and other defects in title; changes in environmental laws; dependence on management and other key personnel; conflicts of interest; foreign operations; changes to Mexican mining taxes; foreign currency fluctuations; operating hazards and

risks associated with the mining industry; the ability to manage growth; competition from other mining exploration companies; lack of a dividend policy; cybersecurity risks; foreign incorporation and civil liabilities; the Company being deemed a passive foreign investment company; the relatively low trading volume of the Common Shares; impairment of exploration and evaluation assets; changes in project parameters as plans continue to be refined; possible variations in ore reserves, grade or recovery rates; accidents, labour disputes and other risks of the mining industry; availability of third party contractors; failure of equipment to operate as anticipated; delays in obtaining governmental approvals or financing or in the completion of development or construction activities; changes in the application of standards pursuant to existing laws and regulations which may increase costs of doing business and restrict operations; the Company's dependence on one mineral project; and the unknown direct and indirect consequences of the COVID-19 pandemic, as well as those factors discussed under the heading "Risks and Uncertainties" sections entitled "Item 3. Key Information - Risk Factors", "Item 4. Information on the Company - Business Overview", "Item 4. Information on the Company – Principal Property Interests" and "Item 5. Operating and Financial Review and Prospects" in the Company's Annual Information Form and all exhibits attached thereto. Although the Company has attempted to identify important factors that could cause actual actions, events, conditions, results, performance or achievements to differ materially from those described in forward-looking information, there may be other factors that cause actions, events, conditions, results, performance or achievements to differ from those anticipated, estimated or intended.

The Company cautions that the foregoing lists of important assumptions and factors are not exhaustive. Other events or circumstances could cause actual results to differ materially from those estimated or projected and expressed in, or implied by, the forward-looking information contained herein. There can be no assurance that forward-looking information will prove to be accurate, as actual results and future events could differ materially from those anticipated in such information. Accordingly, investors should not place undue reliance on forward-looking information.

CAUTIONARY NOTE TO U.S. INVESTORS REGARDING MINERAL RESOURCE AND MINERAL RESERVE ESTIMATES

The United States Securities and Exchange Commission (the "SEC") permits U.S. mining companies, in their filings with the SEC, to disclose only those mineral deposits that a company can economically and legally extract or produce. Almaden uses certain terms such as "measured", "indicated", "inferred", and "mineral resources," which the SEC guidelines strictly prohibit U.S. registered companies from including in their filings with the SEC. For further information see under the heading "Use of the Terms "Mineral Resources" and "Mineral Reserves" in this MD&A.

BOARD OF DIRECTORS AND MANAGEMENT

Directors:

Duane Poliquin, P.Eng
Morgan Poliquin, P.Eng, Ph.D
Elaine Ellingham, MSc., MBA, P.Geo
Kevin O’Kane, P.Eng, GCB.D
Alfredo Phillips
Ria Fitzgerald, B.Com, CFA

Audit Committee members:

Elaine Ellingham, MSc., MBA, P.Geo
Kevin O’Kane, P.Eng, GCB.D
Ria Fitzgerald, B.Com, CFA

Compensation Committee members:

Ria Fitzgerald, B.Com, CFA
Elaine Ellingham, MSc., MBA, P.Geo
Kevin O’Kane, P.Eng, GCB.D

Nominating & Corporate Governance Committee members:

Elaine Ellingham, MSc., MBA, P.Geo
Alfredo Phillips
Kevin O’Kane, P.Eng, GCB.D

Management:

Duane Poliquin, P.Eng – Chairman
Morgan Poliquin, P.Eng, Ph.D – Chief Executive Officer, President
Korm Trieu, CPA, CA – Chief Financial Officer, Corporate Secretary
Douglas McDonald, M.A.Sc, B.Com. – Executive Vice President
John Thomas, P.Eng, BSc., MSc. PhD – Vice President, Project Development